

A short Tutorial on RNA Bioinformatics

The ViennaRNA Package and related Programs

Ivo Hofacker, Ronny Lorenz, Dominik Steininger, and Sven Findeiß

<http://www.tbi.univie.ac.at/RNA/>

November 11, 2021

Contents

1	RNA Web Services	5
1.1	Useful Web Services	5
2	Get started	6
2.1	Typographical Conventions	6
2.2	Data Files	6
2.3	Terminal, Command line and Editor	6
2.4	Installing Software from Source	8
2.4.1	Get the ViennaRNA Package	8
2.5	Build the ViennaRNA Package	9
2.5.1	Build the ViennaRNA Package	9
2.6	What's in the ViennaRNA Package	10
2.6.1	The base directory	10
2.6.2	Which programs are available?	11
2.6.3	Which Utilities are available?	11
2.7	The Input File Format	12
3	Structure Prediction on single Sequences	12
3.1	The Program RNAfold	12
3.1.1	MFE structure of a single sequence	13
3.1.2	Predicting equilibrium properties of the structure ensemble	14
3.1.3	Rotate the structure plot	14
3.1.4	The base pair probability dot plot	15
3.1.5	Mountain and Reliability plot	15
3.1.6	Batch job processing	16
3.1.7	Add constraints to the structure prediction	17
3.1.8	SHAPE directed RNA folding	19
3.1.9	Adding ligand interactions	19
3.1.10	G-quadruplexes	20
3.1.11	Single strand binding (SSB) protein interaction	22
3.1.12	Change other model settings	23
3.2	The Program RNAplot	24
3.3	The Program RNApvmin	25
3.4	The Program RNAsubopt	25
3.4.1	Suboptimal folding	25
3.4.2	Sampling the Boltzmann Ensemble	26
4	RNA folding kinetics	27
4.1	RNA2Dfold	27
4.2	barriers & treekin	28
4.2.1	A short recall on howto install/compile a program	29
4.2.2	Calculate the Barrier Tree	29
4.2.3	Calculate The Barrier Tree	30
4.2.4	Simulating the Folding Kinetics	30

5	Sequence Design	31
5.1	The Program <code>RNAinverse</code>	31
5.1.1	Sequence Design	31
5.2	<code>switch.pl</code>	31
5.2.1	Designing a Switch	32
6	RNA-RNA Interactions	34
6.1	The Program <code>RNAcofold</code>	34
6.1.1	Two Sequences one Structure	34
6.1.2	Secondary Structure Plot and Dot Plot	34
6.2	Concentration Dependency	34
6.2.1	Concentration Dependency	35
6.2.2	Concentration Dependency plot	35
6.3	Finding potential binding sites with <code>RNA duplex</code>	36
6.3.1	Binding site prediction with <code>RNA duplex</code>	36
7	Consensus Structure Prediction	38
7.1	The Program <code>RNAalifold</code>	39
7.1.1	Consensus Structure from related Sequences	39
7.1.2	<code>RNAalifold</code> Output Files	40
7.1.3	Structure predictions for the individual sequences	41
7.1.4	Refolding Individual Sequences	41
8	Structural Alignments	42
8.1	Manually correcting Alignments	42
8.2	Automatic structural alignments	42
8.2.1	Install T-Coffee	43
9	Noncoding RNA gene prediction	43
9.0.1	Programs to predict structural RNAs	43
9.1	QRNA	44
9.1.1	Three competing models in QRNA	44
9.1.2	Installing and basic usage of QRNA	44
9.2	AlifoldZ	45
9.2.1	z-score distribution of tRNAs	45
9.2.2	z-score distribution of tRNA consensus folds	45
9.2.3	Installation and basic usage of AlifoldZ	46
9.3	RNAz	46
9.3.1	The structure conservation index	47
9.3.2	z-score regression	47
9.3.3	SVM Classification	47
9.3.4	Installation of RNAz	48
9.3.5	Basic usage of RNAz	48
9.3.6	Advanced usage of RNAz	48
9.4	Large scale screens	48
9.4.1	General procedure	48
9.4.2	Examples in this tutorial	49
9.4.3	Example a: Preparation of data	49
9.4.4	Example a: Aligning viral genomes	50
9.4.5	Example a: Running the pipeline I	50

9.4.6	Example a: Running the pipeline II	50
9.4.7	Example a: Statistics on the results	51
9.4.8	Example b: Obtaining pre-computed alignments from UCSC	51
9.4.9	Example b: Running the pipeline	51
9.4.10	Example b: Visualizing the results on the genome browser	52

1 RNA Web Services

This tutorial aims to give a basic introduction to using the command line programs in the ViennaRNA Package in a UNIX-like (LINUX) environment. Of course, some of you may ask “Why are there no friendly graphical user interfaces?”. Well, there are some, especially in the form of web services.

If a few simple structure predictions is all you want to do, there are several useful sites for doing RNA structure analysis available on the web. Indeed many of the tasks described below can be performed using various web servers.

1.1 Useful Web Services

- Michael Zuker’s **mfold** server computes (sub)optimal structures and hybridization for DNA and RNA sequences with many options.
Mfold Website
- BiBiServ, several small services e.g. pseudo-knot prediction **pknotsRG**, bi-stable structures **paRNAss**, alignment **RNAforester**, visualization **RNAmovies**, suboptimal structures **RNAshapes**
Bielefeld Bioinformatics Service
- The ViennaRNA Server offers web access to many tools of the ViennaRNA Package, e.g. **RNAfold**, **RNAalifold**, **RNAinverse** and **RNAz**
<http://rna.tbi.univie.ac.at/>
- several specialized servers such as
 - **pfold** consensus structure prediction
pfold RNA fold server
 - **s-fold** stochastic suboptimals and siRNA design
Sfold Webservices
 - **StrAl** progressiv ncRNA alignment tool
StrAl Webservice


Web servers are also a good starting point for novice users since they provide a more intuitive interface. Moreover, the ViennaRNA Server will return the equivalent command line invocation for each request, making the transition from web services to locally installed software easier.

On the other hand, web servers are not ideal for analyzing many or very long sequences and usually they offer only few often-used tasks. Much the same is true for point-and-click graphical interfaces. Command line tools, on the other hand, are ideally suited for automating repetitive tasks. They can even be combined in pipes to process the results of one program with another or they can be used in parallel, running tens or hundreds of tasks simultaneously on a cluster of PCs.

You can try some of these web services in parallel to the exercises below.

2 Get started


2.1 Typographical Conventions

- **Constant width font** is used for program names, variable names and other literal text like input and output in the terminal window.
- Lines starting with a **\$** within a literal text block are commands. You should type the text following the **\$** into your terminal window finishing by hitting the -key. (The **\$** signifies the command line prompt, which may look different on your system).
- All other lines within a literal text block are the output from the command you just typed.

2.2 Data Files



Data files containing the sequences used in the examples below are shipped with this tutorial.

2.3 Terminal, Command line and Editor

- You can get a **terminal** by moving your mouse-pointer to an empty spot of your desktop, clicking the right mouse-button and choose “Open Terminal” from the pull-down menu.
- You can **run commands** in the terminal by typing them next to the command line prompt (usually something like **\$**) followed by hitting the -key.

Example

```
$ date
Tue Jul  7 14:30:25 CEST 2015
```

- To get more information about a command type **man** followed by the *command-name* and hitting the -key. Leave the man pages by pressing the -key.

Example

```
$ man date
```

- Redirect a command’s input and output using the following special characters:
 - ‘|’ ties *stdout* to *stdin*
 - ‘<’ redirects *stdout* to *stdin*
 - ‘>’ redirects *stdout* to a fileHere, *stdout* stands for *standard output*, which you can normally see in the terminal. *stdin* is it’s counterpart, the *standard input*. The character ‘|’ allows you to *pipe* the standard output of one program directly as standard input into another program, hence, the programs are chained together.

Below you'll find a list of some useful core commands available in all Linux terminal.

Command	Description
<code>pwd</code>	displays the path to the current working directory
<code>cd</code>	changes the working directory (initially your "HOME")
<code>ls</code>	lists files and directories in the current (or a specified) directory
<code>mkdir</code>	creates a directory
<code>rm</code>	removes a file (add option <code>-r</code> for deleting a folder)
<code>less</code>	shows file(s) one page at a time
<code>echo</code>	prints string(s) to standard output
<code>wc</code>	command prints the number of newlines, words and bytes in a specified file

For more information regarding these commands prepend `--help` to the program call, like this:

Example

```
$ rm --help
```

Try a few commands on your own, e.g.

Task

```
$ ls > file_list
$ less file_list
$ rm file_list
$ ls | less
```

Here the *stdout* from the `ls` command was written to a file called `file_list`. The next command shows the content of `file_list`. We quit `less` by pressing the `q`-key and removing the file. `ls | less` pipes the output in the `less` program without writing it to a file.

Now we create our working directory including subfolders and our first sequence file using the commands we just learned. Have in mind that you create a good structure so you can find your data easily.

First find out in which directory you are in by typing

Task

```
$ pwd
```

It should look similar to

Example

```
$ /home/YOURUSER
```

To insure yourself, that you are in the correct directory type (`~` is the shortcut for the home-directory)

Example

```
$ cd ~
```

Now create a new folder in your home directory

Task

```
$ mkdir -p ~/Tutorial/Data
$ cd ~/Tutorial/Data
$ echo ATGAAGATGA > BAZ.seq
```

Here we created two new folders in our `HOME`, `Tutorial` and a subfolder called `Data`, then we jumped to the `Data`-folder and wrote a short DNA sequence to the `BAZ.seq` file.

For further processing we need a RNA sequence instead of an DNA sequence, so we need to replace the T by an U by executing following command using `sed` (the stream editor).

```
$ sed -i 's/T/U/g' BAZ.seq
```

The program is called via `sed`, `-i` tells `sed` to replace the existing file (in this case `BAZ.seq`). `s` stands for substitute T by U and `g` tells `sed` to replace all occurring T's in the file globally).

When we look at our file using `less` we should see our new sequence "AUGAA-GAUGA"

```
$ less BAZ.seq
```

2.4 Installing Software from Source

Many bioinformatics programs are available only as source code that has to be compiled and installed. We'll demonstrate the standard way to install programs from source using the **ViennaRNA Package**.

2.4.1 Get the ViennaRNA Package

You can either get the required package, depending on which operating system you run (precompiled package is available for distinct distributions like Fedora, Arch Linux, Debian, Ubuntu, Windows) or you compile the source code yourself. Here we are compiling the programs ourself. Have a look at the file `INSTALL` distributed with the **ViennaRNA Package** for more detail or read the documentation on the url.

Subsequently the instructions for building the source code are:

- (a) Go to your `Tutorials` folder and create a directory

```
$ cd ..  
$ mkdir downloads  
$ cd downloads
```

- (b) Download the **ViennaRNA Package** from <http://www.tbi.univie.ac.at/RNA/index.html> and save it in to the newly created directory.

- (c) Unpack the gzipped tar archive by running: (Replace 2.4.11 with the latest version number)

```
$ tar -zxf ViennaRNA-2.4.11.tar.gz
```

- (d) list the content of the directory

```
$ ls -F  
ViennaRNA-2.4.11/  ViennaRNA-2.4.11.tar.gz
```


2.5 Build the ViennaRNA Package

2.5.1 Build the ViennaRNA Package

The installation location can be controlled through options to the `configure` script. E.g. to change the default installation location to the directory `VRP` in your `$HOME/Tutorial` directory use the `--prefix` tag so the compiler knows that the target directory is changed.

- (a) To configure and build the package just run the following commands.

```
$ cd ViennaRNA-2.4.11
$ mkdir -p ~/Tutorial/Progs/VRP
$ ./configure --prefix=$HOME/Tutorial/Progs/VRP
$ make
$ make install
```

You already know the `cd` and the `mkdir` command, `./configure` checks whether all dependencies are fulfilled and exits the script if some major requirements are missing. If all is ok it creates the `Makefile` which then is used to start the building process via `make install`.

- (b) To install the **ViennaRNA package** system wide (only for people with superuser privileges, which we are NOT!) run

```
$ ./configure
$ make
$ make install
```

You find the installed files in

- (a) `$HOME/Tutorial/Progs/VRP/bin` (programs)
(b) `$HOME/Tutorial/Progs/VRP/share/ViennaRNA/bin` (perl scripts)

Wherever you installed the main programs of the **ViennaRNA Package**, make sure the path to the executables shows up in your `PATH` environment variable. To check the contents of the `PATH` environment variable simply run

```
$ echo $PATH
```

For easier handling we now create a folder containing all our binaries as well as perl scripts and copy them into a common folder.

```
$ cd ~/Tutorial/Progs/
$ cp VRP/share/ViennaRNA/bin/* .
```

Now you can show the contents of the folder using the command `ls`.

Also copy the binaries from the `VRP/bin` folder. In the next step we add the path of the directory to the `PATH` environment variable (e.g. use `pwd`) so we don't need to write the whole path every time we call it.

```
$ export PATH=${HOME}/Tutorial/Progs:${PATH}
```

Note that this is only a temporary solution. If you want the path to be permanently added you need to add the line above to the config file of your shell environment. Typically **bash** is the standard. You need to add the export line above to the **.bashrc** in your homedirectory. To reload the contents of **.bashrc** type

```
$ source ~/.bashrc
```

or close the current terminal and open it again. (Remember, this works only for the **bash** shell.) To check if everything worked out find which source you use.

```
$ which RNAfold
```

The shown path should point to **\$HOME/Tutorial/Progs/**. Finally try to get a brief description of a program e.g.

```
$ RNAfold --help
```

If this doesn't work re-read the steps described above more carefully.

2.6 What's in the ViennaRNA Package

The core of the **ViennaRNA Package** is formed by a collection of routines for the prediction and comparison of RNA secondary structures. These routines can be accessed through stand-alone programs, such as **RNAfold**, **RNAdistance**, etc., which should be sufficient for most users. For those who wish to develop their own programs a library which can be linked to your own code is provided.

2.6.1 The base directory

- make a directory listing of **downloads/ViennaRNA-2.4.11/**

```
$ ls -F ~/Tutorial/downloads/ViennaRNA-2.4.11/
```

aclocal.m4	config.sub*	INSTALL	man/	RNA-Tutorial/
AUTHORS	configure*	install-sh*	misc/	src/
CHANGELOG.md	configure.ac	interfaces/	missing*	tests/
compile*	COPYING	license.txt	NEWS	THANKS
config/	depcomp*	m4/	packaging/	ylwrap*
config.guess*	doc/	Makefile.am	README.md	
config.h.in	examples/	Makefile.in	RNAlib2.pc.in	

You now see the contents of the **ViennaRNA-2.4.11** folder. Directories are marked by a **"/**" and the **"*"** indicates executable files. The **Makefile** contains the rules to compile the code, source code is located within the **src/** directory. **configure** handles distinct options for installation and creation of the **Makefile**. **INSTALL** covers installation instructions and the **README** file contains information about the **ViennaRNA Package**.

2.6.2 Which programs are available?

RNA2Dfold	Compute coarse grained energy landscape of representative sample structures
RNAaliduplex	Predict conserved RNA-RNA interactions between two alignments
RNAalifold	Calculate secondary structures for a set of aligned RNA sequences
RNAcofold	Calculate secondary structures of two RNAs with dimerization
RNAdistance	Calculate distances between RNA secondary structures
RNAduplex	Compute the structure upon hybridization of two RNA strands
RNAeval	Evaluate free energy of RNA sequences with given secondary structure
RNAfold	Calculate minimum free energy secondary structures and partition function of RNAs
RNAheat	Calculate the specific heat (melting curve) of an RNA sequence
RNAinverse	Find RNA sequences with given secondary structure (sequence design)
RNAalifold	Calculate locally stable secondary structures for a set of aligned RNAs
RNAfold	Calculate locally stable secondary structures of long RNAs
RNApaln	RNA alignment based on sequence base pairing propensities
RNApdist	Calculate distances between thermodynamic RNA secondary structures ensembles
RNAparconv	Convert energy parameter files from ViennaRNA 1.8 to 2 format
RNApkplex	Predict RNA secondary structures including pseudoknots
RNAplex	Find targets of a query RNA
RNAplfold	Calculate average pair probabilities for locally stable secondary structures
RNAplot	Draw and markup RNA secondary structures in PostScript, SVG, or GML
RNApvmmin	Find a vector of perturbation energies which may further be used to constrain folding
RNA snoop	Find targets of a query H/ACA snoRNA
RNAsubopt	Calculate suboptimal secondary structures of RNAs
RNAup	Calculate the thermodynamics of RNA-RNA interactions
Kinfold	simulates the stochastic folding kinetics of RNA sequences into secondary structures
RNAforester ¹	compare RNA secondary structures via forest alignment

2.6.3 Which Utilities are available?

b2ct	converts dot-bracket notation to Zukers mfold '.ct' file format
b2mt.pl	converts dot-bracket notation to x y values
cmount.pl	generates colored mountain plot
coloraln.pl	colorize an alirna.ps file
colorrna.pl	colorize a secondary structure with reliability annotation
ct2db	converts Zukers mfold '.ct' file format to dot-bracket notation
dpzoom.pl	extract a portion of a dot plot
mountain.pl	generates mountain plot
popt	extract Zuker's p-optimal folds from subopt output
refold.pl	refold using consensus structure as constraint
relplot.pl	add reliability information to a RNA secondary structure plot
rotate.ss.pl	rotate the coordinates of an RNA secondary structure plot
switch.pl	describes RNA sequences that exhibit two almost equally stable structures

All programs that are shipped with the **ViennaRNA Package** provide some documentation in the form of "man pages". In UNIX like environments, these manual pages can be viewed using the **man** command after successfully installing the **ViennaRNA Package**:

```
$ man RNAalifold
```

Alternatively, an online version of the manual pages is available at <https://www.tbi.univie.ac.at/RNA/documentation.html#programs>. Note, that the **MANPATH** environment variable requires to be updated if the **ViennaRNA Package** has been installed in a non-standard path.

¹RNAforester is not developed by the TBI Vienna.

There also is a helpful documentation in the folder of the **ViennaRNA Package**:
 /Tutorial/downloads/ViennaRNA-2.4.11/doc/RNALib-2.4.11.pdf

Most Perl scripts carry embedded documentation that is displayed by typing

```
$ perl doc coloraln.pl
```

in the folder where the script is located. All scripts and programs give short usage instructions when called with the `-h` command line option (e.g. `RNAalifold -h`).

2.7 The Input File Format

RNA sequences come in a variety of formats. The sequence format used throughout the ViennaRNA Package is very simple. A sequence file contains one or more sequences. Each sequence either spans a single line without any additional whitespaces, or the file is **FASTA** formatted. In the latter case, the sequence is preceded by a special header line that starts with the `>` character followed by a sequence identifier. This identifier, usually a unique name assigned to the sequence, will then be used by the programs in the **ViennaRNA Package** as basename for any output files. Please note some of the programs do not support the **FASTA** format yet. Furthermore, programs that require multiple input sequences, e.g. for interaction prediction, may require them as separate lines, or in a concatenated form on a single line with the delimiting character `&`. Please read the corresponding manpages and `--help` output to find out the actual input format requirements.

3 Structure Prediction on single Sequences

3.1 The Program RNAfold

Our first task will be to do a structure prediction using **RNAfold**. This should get you familiar with the input and output format as well as the graphical output produced.

RNAfold reads single RNA sequences, computes their minimum free energy (MFE) structures, and prints the result together with the corresponding MFE structure in dot-bracket notation. This is the default mode if no further command line parameters are provided. Please note, that the **RNAfold** program can either be used in *interactive mode*, where the program expects the input from *stdin*, or in *batch processing mode* where you provide the input sequences as text files.

To activate computation of the partition function for each sequence, the `-p` option must be set. From the partition function

$$Q = \sum_{s \in \Omega} \exp(-E(s)/RT)$$

over the ensemble of all possible structures Ω , with temperature T and gas constant R , **RNAfold** then computes the ensemble free energy $G = -RT \cdot \ln(Q)$, and frequency of the MFE structure s_{mfe} within the ensemble

$$p = \exp(-E(s_{mfe})/RT)/Q$$

Furthermore, by default, the `-p` option also activates the computation of base pairing probabilities p_{ij} . From this data, **RNAfold** then determines the ensemble diversity

$$\langle d \rangle = \sum_{ij} p_{ij} \cdot (1 - p_{ij}),$$

i.e. the expected distance between any two secondary structure, as well as the **centroid** structure, i.e. the structure s_c with the least Boltzmann weighted distance

$$d_{\Omega}(s_c) = \sum_{s \in \Omega} p(s) d(s_c, s).$$

to all other structures $s \in \Omega$.

Another useful structure representative one can determine from base pairing probabilities p_{ij} is the structure that exhibits the *maximum expected accuracy (MEA)*. By assuming the base pair probability is a good measure of correctness of a pair (i, j) , the expected accuracy of a structure s is

$$EA(s) = \sum_{(i,j) \in s} 2\gamma p_{ij} + \sum_{\substack{i \\ \nexists (i,j) \in s}} q_i$$

with $q_i = 1 - \sum_j p_{ij}$ and weighting factor γ that allows us to weight paired against unpaired positions. **RNAfold** uses a dynamic programming scheme similar to the *Maximum Matching algorithm* of Ruth Nussinov to find the structure s that minimizes the above equation. The **RNAfold** program provides a large amount of additional computation modes that will be partly covered below. To get a full list of all computation modes available, please consult the **RNAfold** man page or the outputs of **RNAfold -h** and **RNAfold --detailed-help**.

3.1.1 MFE structure of a single sequence

- (a) Use a text editor (emacs, vi, nano, gedit) to prepare an input file by pasting the text below and save it under the name **test.seq** in your **Data** folder.

```
> test
CUACGGCGGGCGCCCUUGGCGA
```

- (b) Compute the best (MFE) structure for this sequence using *batch processing mode*

```
$ RNAfold test.seq
CUACGGCGGGCGCCCUUGGCGA
.....((((.....))). ( -5.00)
```

- (c) or use the *interactive mode* and redirect the content of **test.seq** to *stdin*

```
$ RNAfold < test.seq
CUACGGCGGGCGCCCUUGGCGA
.....((((.....))). ( -5.00)
```

- (d) alternatively, you could use the *interactive mode* and manually enter the sequence as soon as **RNAfold** prompts for input

```
$ RNAfold
Input string (upper or lower case); @ to quit
.....1.....2.....3.....4.....5.....6.....7.....8
CUACGGCGGGCGCCCUUGGCGA
length = 23

CUACGGCGGGCGCCCUUGGCGA
.....((((.....))).
minimum free energy = -5.00 kcal/mol
```

All the above variants to compute the MFE and the corresponding structure result in identical output, except for slight variations in the formatting when true *interactive mode* is used. The last line(s) of the text output contains the predicted MFE structure in *dot-bracket notation* and its free energy in kcal/mol. A dot in the dot-bracket notation represents an unpaired position, while a base pair (i, j) is represented by a pair of matching parentheses at position i and j.

If the input was **FASTA** formatted, i.e. the sequence was preceded by a header line with sequence identifier, **RNAfold** creates a structure layout file named **test.ss.ps**, where **test** is the sequence identifier as provided through the **FASTA** header. In case the header was omitted the output file name simply is **rna.ps**.

Let's take a look at the output file with your favorite **PostScript** viewer, e.g. **gv**². Note the & at the end of the following command line that simply detaches the program call and immediately starts the program in the background.

```
$ gv test.ss.ps &
```

Compare the dot-bracket notation to the **PostScript** drawing shown in the file **test.ss.eps**. You can use the **-t** option to change the layout algorithm **RNAfold** uses to produce the plot. The most simply layout is the *radial* layout that can be chosen with **-t 0**. Here, each nucleotide in a loop is equally spaced on its enclosing circle. The more sophisticated **Naview**

²In contrast to bitmap based image files (such as GIF or JPEG) **PostScript** files contain resolution independent vector graphics, suitable for publication. They can be viewed on-screen using a postscript viewer such as **gv** or **evince**

layout algorithm is used by default but may be explicitly chosen through `-t 1`. A hidden feature can be found with `-t 2`, where **RNAfold** creates a most simple circular plot. The calculation above does not tell us whether we can actually trust the predicted structure. In fact, there may be many more possible structures that might be equally probable. To find out about that, let's have a look at the equilibrium ensemble instead.

3.1.2 Predicting equilibrium properties of the structure ensemble

- (a) Run **RNAfold** `-p --MEA` to compute the partition function, pair probabilities, centroid structure, and the maximum expected accuracy (MEA) structure.
- (b) Have a look at the generated PostScript files `test.ss.ps` and `test.dp.ps`

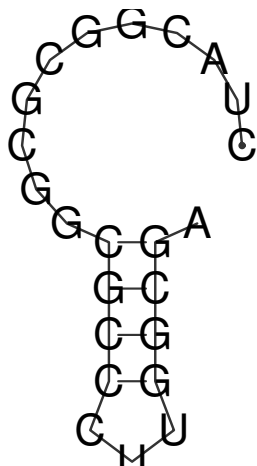
```
$ RNAfold -p --MEA test.seq
CUACGGCGCGGCGCCUUGGCGA
.....((((.....))). ( -5.00)
....{,{...|||...}}}. [ -5.72]
.....{ 0.00 d=4.66}
.....((...))((...))... { 2.90 MEA=14.79}
frequency of mfe structure in ensemble 0.311796; ensemble diversity 6.36
```

Here the last four lines are new compared to the text output without the `-p --MEA` options. The partition function is already a rough measure for the well-definedness of the MFE structure. The third line shows a condensed representation of the pair probabilities of each nucleotide, similar to the dot-bracket notation, followed by the ensemble free energy ($G = -kT \cdot \ln(Z)$) in kcal/mol. Here, the dot-bracket like notation consists of additional characters that denote the pairing propensity for each nucleotide. "." denotes bases that are essentially unpaired, "," weakly paired, "|" strongly paired without preference, "{},()" weakly (>33%) upstream (downstream) paired or strongly (>66%) up-/downstream paired bases, respectively.

The next two lines represent (i) the centroid structure with its free energy and distance to the ensemble, and (ii) the MEA structure, its free energy and the actual accuracy. The very last line shows the frequency of the MFE structure in the ensemble of secondary structures and the diversity of the ensemble as discussed above.

Note that the MFE structure is adopted only with 31% probability, also the diversity is very high for such a short sequence.

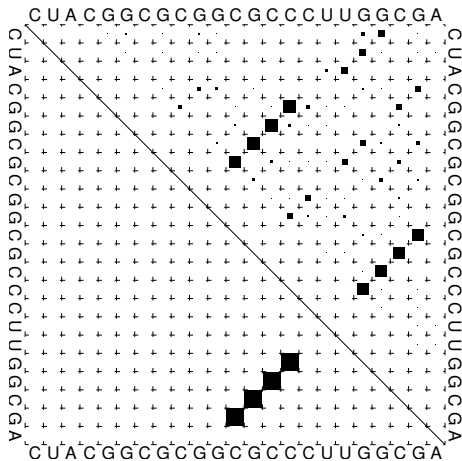
3.1.3 Rotate the structure plot



To rotate the secondary structure plot that is generated by **RNAfold** the **ViennaRNA Package** provides the perl script utility `rotate.ss.pl`. Just read the `perldoc` for this tool to know how to handle the rotation and use the information to get your secondary structure in a vertical position.

```
$ perl doc rotate_ss.pl
```

3.1.4 The base pair probability dot plot



The “dot plot” (`test_dp.ps`) shows the pair probabilities within the equilibrium ensemble as $n \times n$ matrix, and is an excellent way to visualize structural alternatives. A square at row i and column j indicates a base pair. The area of a square in the upper right half of the matrix is proportional to the probability of the base pair (i, j) within the equilibrium ensemble. The lower left half shows all pairs belonging to the MFE structure. While the MFE consists of a single helix, several different helices are visualized in the pair probabilities.

While a base pair probability dot-plot is quite handy to interpret for short sequences, it quickly becomes confusing the longer the RNA sequence is. Still, this is (currently) the only output of base pair probabilities for the `RNAfold` program. Nevertheless, since the dot plot is a true `PostScript` file, one can retrieve the individual base pair probabilities by parsing its textual content.

- (a) Open the dot plot with your favorite text editor
- (b) Locate the lines that follow the scheme

```
i j v ubox
```

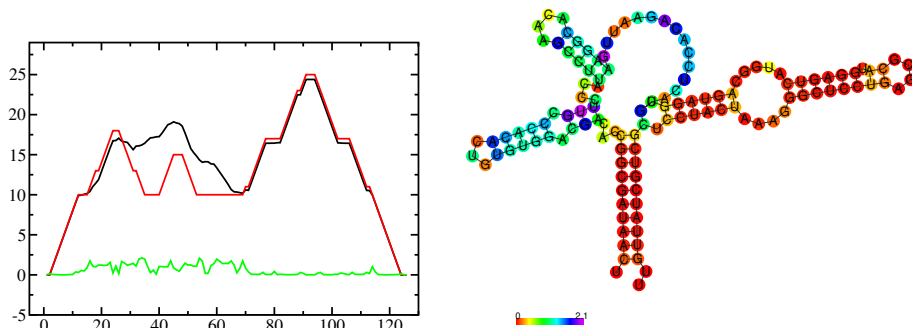
where i and j are integer values and v is a floating point decimal with values between 0 and 1. These are the data for the boxes drawn in the upper triangle. The integer values i and j denote the nucleotide positions while the value v is the square-root of the probability of base pair (i, j) . Thus, the actual base pair probability $p(i, j) = v * v$.

3.1.5 Mountain and Reliability plot

Next, let's use the `relplot.pl` utility to annotate which parts of a predicted MFE structure are well-defined and thus more reliable. Also let's use a real example for a change and produce yet another representation of the predicted structure, the *mountain plot*.

Fold the 5S rRNA sequence and visualize the structure. (The `5S.seq` is shipped with the tutorial)

```
$ RNAfold -p 5S.seq
$ mountain.pl 5S_dp.ps | xmgrace -pipe
$ relplot.pl 5S_ss.ps 5S_dp.ps > 5S_rss.ps
```



A mountain plot is especially useful for long sequences where conventional structure drawings become terribly cluttered. It is a xy-diagram plotting the number of base pairs enclosing a sequence position *versus* the position. The Perl script `mountain.pl` transforms a dot plot into the mountain plot coordinates which can be visualized with any xy-plotting program, e.g. `xmgrace`.

The resulting plot shows three curves, two mountain plots derived from the MFE structure (red) and the pairing probabilities (black) and a positional entropy curve (green). Well-defined regions are identified by low entropy. By superimposing several mountain plots structures can easily be compared.

The perl script `relplot.pl` adds reliability information to a RNA secondary structure plot in the form of color annotation. The script computes a well-definedness measure we call “positional entropy”

$$S(i) = - \sum p_{ij} \log(p_{ij})$$

and encodes it as color hue, ranging from red (low entropy, well-defined) via green to blue and violet (high entropy, ill-defined). In the example above two helices of the 5S RNA are well-defined (red) and indeed predicted correctly, the left arm is not quite correct and disordered. For the figure above we had to rotate and mirror the structure plot, e.g.

```
$ rotate_ss.pl -a 180 -m 5S_rss.ps > 5S_rot.ps
```

3.1.6 Batch job processing

In most cases, one doesn’t only want to predict the structure and equilibrium probabilities for a single RNA sequence but a set of sequences. `RNAfold` is perfectly suited for this task since it provides several different mechanisms to support batch job processing. First, in *interactive* mode, it only stops processing input from `stdin` if it is requested to do so. This means that after processing one sequence, it will prompt for the input of the next sequence. Entering the `@` character will forcefully abort processing. In situations where the input is provided through input stream redirection, it will end processing as soon stream is closed.

In contrast to that, the *batch processing mode* where one simply specifies input files as so-called unnamed command line parameters, the number of input sequences is more or less unlimited. You can specify as many input files as your terminal emulator allows, and each input file may consist of arbitrarily many sequences. However, please note that mixing `FASTA` and non-`fasta` input is not allowed and will most likely produce bogus output.

Assume you have four input files `file_0.fa`, `file_1.fa`, `file_2.fa`, and `file_3.fa`. Each file contains a set of RNA sequences in `FASTA` format. Predicting secondary structures for all sequences in all files with a single call to `RNAfold` and redirecting the output to a file `all_sequences_output.fold` can be achieved like this:

```
$ RNAfold file_0.fa file_1.fa file_2.fa file_3.fa > all_sequences_output.fold
```

The above call to `RNAfold` will open each of the files and process the sequences sequentially. This, however, might take a long time and the sequential processing will most likely bore out your multi-core workstation or laptop computer, since only a single core is used for the computations while the others are idle. If you happen to have more than a single CPU core and want to take advantage of the available parallel processing power, you can use the `-j` option of `RNAfold` to split the input into concurrent jobs.


```
$ RNAfold -j file_*.fa > all_sequences_output.fold
```

This command will use as many CPU cores as available and, therefore, process your input much faster. If you want to limit the number of concurrent jobs to a particular number, say 2, to leave the remaining cores available for other tasks, you can append the number of jobs directly to the `-j` option:

```
$ RNAfold -j2 file_*.fa > all_sequences_output.fold
```

Note here, that there must not be any space between the `j` and the number of jobs. Now imagine what happens if you have a larger set of sequences that are not stored in **FASTA** format. If you would serve such an input to **RNAfold**, it would happily process each of the sequences but always over-write the structure layout and dot-plot files, since the default names for these files are **rna.ps** and **dot.ps** for any sequence. This is usually an undesired behavior, where **RNAfold** and the `--auto-id` option becomes handy. This option flag forces **RNAfold** to automatically create a sequence identifier for each input, thus using different file names for each single output. The identifier that is created follows the form

```
sequence_XXXX
```

where **sequence** is a prefix, followed by the delimiting character `_`, and an increasing 4-digit number **XXXX** starting at 0000. This feature is even useful if the input is in **FASTA** format, but one wants to enforce a novel naming scheme for the sequences. As soon as the `--auto-id` option is set, **RNAfold** will ignore any id taken from existing **FASTA** headers in the input files. See also the man page of **RNAfold** to find out how to modify the prefix, delimiting character, start number and number of digits.

- (a) Create an input file with many RNA sequences, each on a separate line, e.g.

```
$ randseq -n 127 > many_files.seq
```

- (b) Compute the MFE structure for each of the sequences and generate output ids with numbers between 100 and 226 and prefix **test_seq**

```
$ RNAfold --auto-id --id-start=100 --id-prefix="test_seq" many_files.seq
```

3.1.7 Add constraints to the structure prediction

For some scientific questions one requires additional constraints that must be enforced when predicting secondary structures. For instance, one might have resolved parts of the structure already and is simply interested in the optimal conformation of the remaining part of the molecule. Another example would be that one already knows that particular nucleotides can not participate in any base pair, since they are physically hindered to do so. These types of constraints are termed *hard* constraints and they can enforce or prohibit particular conformations, thus include or omit structures with these features from the set candidate ensemble.

Another type of constraints are so-called *soft* constraints, that enable one to adjust the free energy contributions of particular conformations. For instance, one could add a bonus energy if a particular (stretch of) nucleotides is left unpaired to emulate the binding free energy of a single strand binding protein. The same can be applied to base pairs, for instance one could add a penalizing energy term if a particular base pair is formed to make it less likely.

The **RNAfold** programs come with a comprehensive hard and soft constraints support and provides several convenient command line parameters to ease constraint application.

The most simple hard constraint that can be applied is the maximum base pair span, i.e. the maximum number of nucleotides a particular base pair may span. This constraint can be applied with the `--maxBPspan` option followed by an integer number.

- (a) Compute the secondary structure for the **5S.seq** input file

- (b) Now limit the maximum base pair span to 50 and compare both results

```
$ RNAfold --maxBPspan 50 5S.seq
```

Now assume you already know parts of the structure and want to *fill-in* an optimal remaining part. You can do that by using the `-C` option and adding an additional line in dot-bracket notation to the input (after the sequence) that corresponds to the known structure:

- (a) Prepare the input file **hard.const.example.fa**

```
>my_constrained_sequence
GCCCUUGUCGAGAGGAACUCGAGACACCCACUACCCACUGAGGACUUUCG
..((((.....))))
```

Note here, that we left out the remainder of the input structure constraint that will eventually be used to enforce a helix of 4 base pairs at the beginning of the sequence. You may also fill the remainder of the constraint with dots to silence any warnings issued by `RNAfold`.

- (b) Compute the MFE structure for the input

```
$ RNAfold hard_const_example.fa
>my_constrained_sequence
GCCCUUGUCGAGAGGAACUCGAGACACCCACUACCCACUGAGGACUUUCG
.....((((((...(((.....))))..)))))) ( -8.00)
```

- (c) Now compute the MFE structure under the provided constraint

```
$ RNAfold -C hard_const_example.fa
>my_constrained_sequence
GCCCUUGUCGAGAGGAACUCGAGACACCCACUACCCACUGAGGACUUUCG
..((((.....)))).....((((((...(((.....))))..)))))) ( -7.90)
```

- (d) Due to historic reasons, the `-C` option alone only forbids any base pairs that are incompatible with the constraint, rather than enforcing the constraint. Thus, if you compute equilibrium probabilities, structures that are missing the small helix in the beginning are still part of the ensemble. If you want to compute the pairing probabilities upon forcing the small helix at the beginning, you can add the `--enforceConstraint` option:

```
$ RNAfold -p -C --enforceConstraint hard_const_example.fa
>my_constrained_sequence
GCCCUUGUCGAGAGGAACUCGAGACACCCACUACCCACUGAGGACUUUCG
..((((.....)))).....((((((...(((.....))))..)))))) ( -7.90)
```

Have a look at the differences in ensemble free energy and base pair probabilities between the results obtained with and without the `--enforceConstraint` option.

A more thorough alternative to provide constraints is to use the `--commands` option and a corresponding *commands file*. This allows one to specify constraints on nucleotide or base pair level and even to restrict a constraint to particular loop types. A commands file is a simple multi column text file with one constraint on each line. A line starts with a one- or two-letter command, followed by multiple values that specify the addressed nucleotides, the loop context restriction, and, for soft constraints, the strength of the constraint in *kcal/mol*. The syntax is as follows:

```
F i 0 k [TYPE] [ORIENTATION] # Force nucleotides i...i+k-1 to be paired
F i j k [TYPE] # Force helix of size k starting with (i,j) to be formed
P i 0 k [TYPE] # Prohibit nucleotides i...i+k-1 to be paired
P i j k [TYPE] # Prohibit pairs (i,j),..., (i+k-1,j-k+1)
P i-j k-1 [TYPE] # Prohibit pairing between two ranges
C i 0 k [TYPE] # Nucleotides i,...,i+k-1 must appear in context TYPE
C i j k # Remove pairs conflicting with (i,j),..., (i+k-1,j-k+1)
E i 0 k e # Add pseudo-energy e to nucleotides i...i+k-1
E i j k e # Add pseudo-energy e to pairs (i,j),..., (i+k-1,j-k+1)
```

with

```
[TYPE] = { E, H, I, i, M, m, A }
[ORIENTATION] = { U, D }
```

- (a) Prepare a commands file `test.constraints` that forces the first 5 nucleotides to pair and the following 3 nucleotides to stay unpaired as part of a multi-branch loop:

```
F 1 0 5
C 6 0 3 M
```

- (b) Use the `randseq` program to generate multiple sequences and compute the MFE structure for each under the constraints prepared earlier.

```
$ randseq -n 20 | RNAfold --commands test.constraints
```

Inspect the output to assure yourself that the commands have been applied

A couple of much more sophisticated constraints will be discussed below.

3.1.8 SHAPE directed RNA folding

In order to further improve the quality of secondary structure predictions, mapping experiments like SHAPE (selective 2'-hydroxyl acylation analyzed by primer extension) can be used to experimentally determine the pairing status for each nucleotide. In addition to thermodynamic based secondary structure predictions, RNAfold supports the incorporation of this additional experimental data as soft constraints.

If you want to use SHAPE data to guide the folding process, please make sure that your experimental data is present in a text file, where each line stores three white space separated columns containing the position, the abbreviation and the normalized SHAPE reactivity for a certain nucleotide.

```
1 G 0.134
2 C 0.044
3 C 0.057
4 G 0.114
5 U 0.094
...
...
...
71 C 0.035
72 G 0.909
73 C 0.224
74 C 0.529
75 A 1.475
```

The second column, which holds the nucleotide abbreviation, is optional. If it is present, the data will be used to perform a cross check against the provided input sequence. Missing SHAPE reactivities for certain positions can be indicated by omitting the reactivity column or the whole line. Negative reactivities will be treated as missing. Once the SHAPE file is ready, it can be used to constrain folding:

```
$ RNAfold --shape=rna.shape --shapeMethod=D < rna.seq
```

A small compilation of reference data taken from Hajdin et al. 2013 is available online https://weeks.chem.unc.edu/data-files/ShapeKnots_DATA.zip. However, the included reference structures are only available in connect (.ct) format and require conversion into dot-bracket notation to compare them against predicted structures with RNAfold. Furthermore, the normalized SHAPE data is available as Excel spreadsheet and also requires some pre-processing to make it available for RNAfold.

3.1.9 Adding ligand interactions

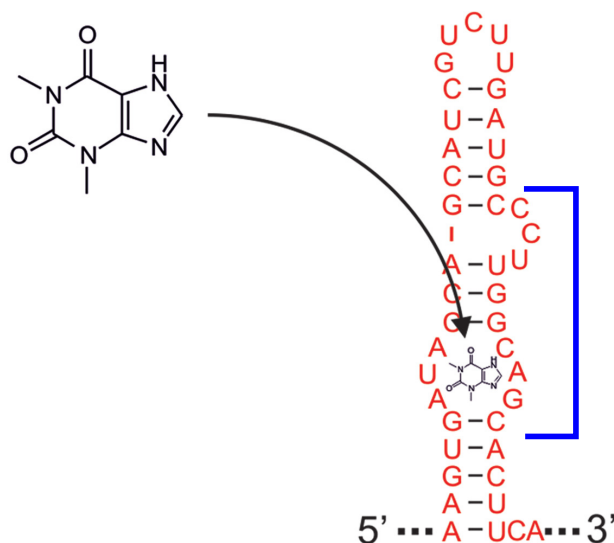
RNA molecules are known to interact with other molecules, such as additional RNAs, proteins, or other small ligand molecules. Some interactions with small ligands that take place in loops of an RNA structure can be modeled in terms of soft constraints. However, to stay compatible with the recursive decomposition scheme for secondary structures they are limited to the unpaired nucleotides of hairpins and internal loops.

The RNALib library of the ViennaRNA Package implements a most general form of constraints capability. However, the available programs do not allow for a full access to the implemented features. Nevertheless, RNAfold provides a convenience option that allows to easily include ligand binding to hairpin- or interior-loop like aptamer motifs. For that purpose, a user needs only to provide motif and a binding free energy.

Consider the following example file `theo.fa` for a theophylline triggered riboswitch with the sequence

```
>theo-switch
GGUGAUACCAGAUUUCGCGAAAAUCCUUGGCAGCACCUCGCACAUCUUGUUGUC
UGAUUUAUGAUUUUUCGCGAAACCAUUUGAUCUAUGACAAGAUUGAG
```

The theophylline aptamer structure has been actively researched during the last two decades.



Although the actual aptamer part (marked in blue) is not a simple interior loop, it can still be modeled as such. It consists of two delimiting base pairs (G,C) at the 5' site, and another (G,C) at its 3' end. That is already enough to satisfy the requirements for the `--motif` option of `RNAfold`. Together with the aptamer sequence motif, the entire aptamer can be written down in dot-bracket form as

```
GAUACCAG&CCCUUGGCAGC
(...((((&)...)))...)
```

Note here, that we separated the 5' and 3' part from each other using the `&` character. This enables us to omit the variable hairpin end of the aptamer from the specification in our model. The only ingredient that is still missing is the actual stabilizing energy contribution induced by the ligand binding into the aptamer pocket. But several experimental and computational studies have already determined dissociation constants for this system. Jenison et al. 1994, for instance, determined a dissociation constant of $K_d = 0.32\mu M$ which, for standard reference concentration $c = 1mol/L$, can be translated into a binding free energy

$$\Delta G = RT \cdot \ln \frac{K_d}{c} \approx -9.22 \text{ kcal/mol}$$

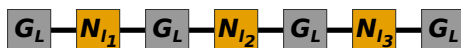
Finally, we can compute the MFE structure for our example sequence

```
$ RNAfold -v --motif "GAUACCAG&CCCUUGGCAGC,...((((&)...)))...",-9.22" theo.fa
```

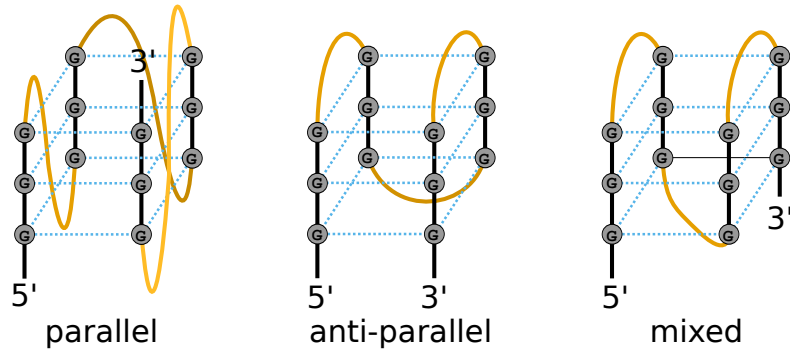
Compare the predicted MFE structure with and without modeling the ligand interaction. You may also enable partition function computation to compute base pair probabilities, the centroid structure and MEA structure to investigate the effect of ligand binding on ensemble diversity.

3.1.10 G-quadruplexes

G-Quadruplexes are a common conformation found in G-rich sequences where four runs of consecutive G's are separated by three short sequence stretches.



They form local self-enclosed stacks of G-quartets bound together through 8 Hoogsteen-Watson Crick bonds and further stabilized by a metal ion (usually potassium).



To acknowledge the competition of regular secondary structure and G-quadruplex formation, the **ViennaRNA Package** implements an extension to the default recursion scheme. For that purpose, G-quadruplexes are simply considered a different type of substructure that may be incorporated like any other substructure. The free energy of a particular G-quadruplex at temperature T is determined by a simple energy model

$$E(L, l_{tot}, T) = a(t) \cdot (L - 1) + b(T) \cdot \ln(l_{tot} - 2)$$

that only considers the number of stacked layers L and the total size of the three linker sequences $l_{tot} = l_1 + l_2 + l_3$ connecting the G runs. Linker sequence and asymmetry effects as well as relative strand orientations (parallel, anti-parallel or mixed) are entirely neglected in this model. The free energy parameters

$$a(T) = H_a + TS_a$$

and

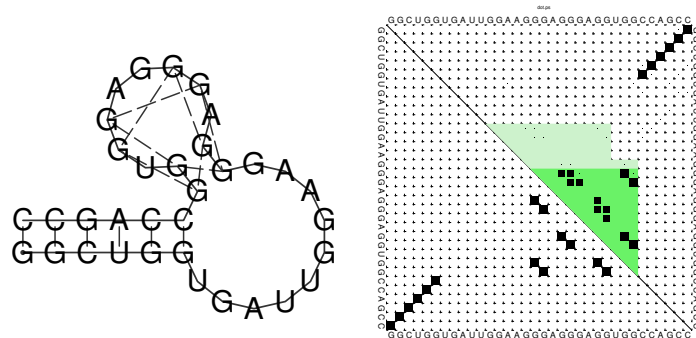
$$b(T) = H_b + TS_b$$

have been determined from experimental UV-melting data taken from Zhang et al. 2011, Biochemistry.

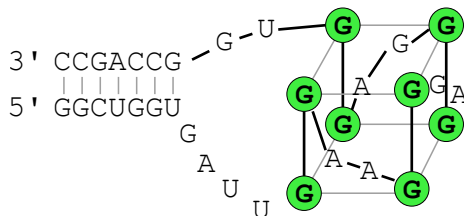
RNAfold allows one to activate the G-quadruplex implementation by simply providing the `-g` switch. G-quadruplexes are then taken into account for MFE and equilibrium probability computations.

```
$ echo "GGCUGGUGAUUGGAAGGGAGGGAGGUGGCCAGCC" | RNAfold -g -p
GGCUGGUGAUUGGAAGGGAGGGAGGUGGCCAGCC
(((((((.....++..++..++..)))))) (-21.39)
(((((((.....(.....)))))) [-21.83]
(((((((.....++..++..++..)))))) {-21.39 d=0.04}
frequency of mfe structure in ensemble 0.491118; ensemble diversity 0.08
```

The resulting structure layout and dot plot *PostScript* files depict the predicted G-quadruplexes as hairpin-like loops with additional bonds between the interacting G's, and green triangles where the color intensity encodes the G-quadruplex probability, respectively. Have a closer look at the actual G-quadruplex probabilities by opening the dot plot *PostScript* file with a text browser again.



A better drawing of the predicted G-quadruplex might look as follows



Repeat the above analysis for other RNA sequences that might contain and form a G-quadruplex, e.g. the human telomerase RNA component hTERC

```
>hTERC
AGAGAGUGACUCACGAGAGCCGCGAGAGUCAGCUUGGCCAAUCCGUGCGGUCGG
CGGCCGCUCUUUAUAAGCCGACUCGCCCGGACGCGACCGGGUUGCGGAGGGUG
GGCCUGGGAGGGUGGGCCAUUUUUUGUCUAACCUAACUGAGAAGGGCGUAGG
CGCCGUGCUUUUGCUCCCGCGCGCUGUUUUUCGCGUGACUUUCAGCGGGCGGAA
AAGCCUCGGCCUGCCGUCCACCGUUCUAGAGCAAAACAAAAAUGUCAGC
UGCUGGCCGUCGCCCUCCCGGGACCGCGCGGUGCGCCUCCGAGCCCGCCG
AACCCCGCCUGGAGGCCGCGGUCGGCCCGGGGCUUCUCCGAGGCACCCACUGCCA
CCGCGAAGAGUUGGGCUCUGUCAGCCGCGGGUCUCUGGGGGCGAGGGCGAGGUUC
AGGCCUUUCAGGCCGCGAGGAAGAGGAACGGAGCGAGUCCCGCGCGCGCGGAUU
CCUGAGCUGUGGGACGUGCACCAGGACUCGGCUCACACAUGC
```

3.1.11 Single strand binding (SSB) protein interaction

Similar to the ligand interactions discussed above, a single strand binding (SSB) protein might bind to consecutively unpaired sequence motifs. To model such interactions the **ViennaRNA Package** implements yet another extension to the folding grammar to cover all cases a protein may bind to, termed *unstructured domains*. This is in contrast to the ligand binding example above that uses the soft constraints implementation, and is, therefore, restricted to unpaired hairpin- and interior-loops.

To make use of this implementation in **RNAfold** one has to resort to *command files* again. Here, an unstructured domain (UD) can be easily added using the following syntax

```
UD m e [LOOP]
```

where **m** is the sequence motif the protein binds to in IUPAC format, **e** is the binding free energy in *kcal/mol*, and the optional **LOOP** specifier allows for restricting the binding to particular loop types, e.g. **M** for multibranch loops, or **E** for the exterior loop. See the syntax for command files above for an overview of all loop types available.

As an example, consider the protein binding experiment taken from Forties and Bundschuh 2010, Bioinformatics (<https://dx.doi.org/10.1093/bioinformatics/btp627>). Here, the authors investigate a hypothetical unspecific RNA binding protein with a footprint of 6 *nt* and a binding energy of $\Delta G = -10$ *kcal/mol* at 1 *M*. With $T = 37^\circ\text{C}$ and

$$\Delta G = RT \cdot \ln \frac{K_d}{c}$$

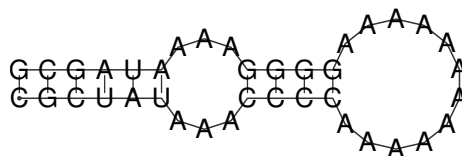
this translates into a dissociation constant of

$$K_d = \exp(\Delta G/RT) = 8.983267433 \cdot 10^{-8}.$$

Hence, the binding energies at 50 *nM*, 100 *nM*, 400 *nM*, and 1 μM are 0.36 *kcal/mol*, -0.07 *kcal/mol*, -0.92 *kcal/mol*, and -1.49 *kcal/mol*, respectively. The RNA sequence file **forties.bundschuh.fa** for this experiment is

```
>forties_bundschuh
CGCUAUAAACCCCAAAAAAAAAAGGGGAAAAUAGCG
```

which yields the following MFE structure



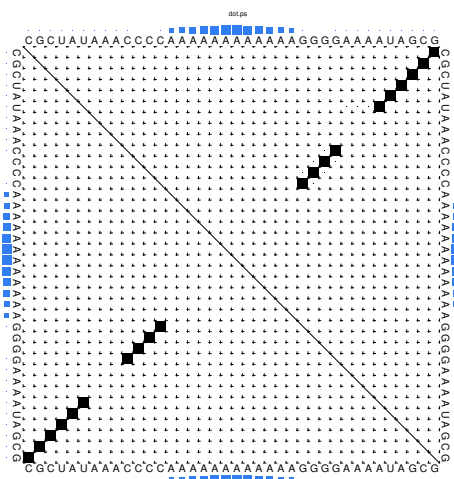
To model the protein binding for this example with **RNAfold** we require a commands file for each of the concentrations in question. Thus, one simply creates text files with a single line content

```
UD NNNNNN e
```

where **e** is the binding free energy at this specific protein concentration as computed above. Note here, that we use **NNNNNN** as sequence motif that is bound by the protein to acknowledge the unspecific interaction between protein and RNA. Finally, **RNAfold** is executed to compute equilibrium base pairing and per-nucleotide protein binding probabilities

```
$ RNAfold -p --commands forties_50nM.txt forties_bundschuh.fa
```

and the produced probability dot plot can be inspected.



As you can see, the dot plot is augmented with an additional linear array of blue squares along each side that depicts the probability that the respective nucleotide is bound by the protein. Now, repeat the computations for different protein concentrations and compare the probabilities computed with the unstructured domain feature of the **ViennaRNA Package** with those in Fig. 3(a) of the publication.

Note, that **RNAfold** allows for an unlimited number of different proteins specified in the commands file. This easily allows one to model RNA-protein binding interaction within a relatively complex solution of different competing proteins.

3.1.12 Change other model settings

RNAfold also allows for many other changes of the implemented Nearest Neighbor model. For instance, you can explicitly prohibit (*G,U*) pairs, change the temperature that is used for evaluation of the free energy of particular loops, select a different dangling-end energy model or load a different set of free energy parameters, e.g. for DNA or parameters derived from computational optimizations.

See the man pages of **RNAfold** for a complete overview of all available options and command line switches. Additional energy parameter collections are distributed together with the **ViennaRNA Package** as part of the contents of the **misc/** directory, and are typically installed in

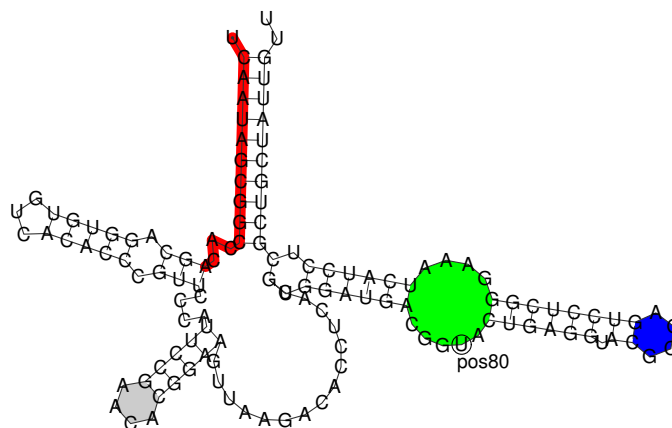
```
prefix/share/ViennaRNA
```

where **prefix** is the path that was used as installation prefix, e.g. **\$HOME/Tutorial/Progs/VRP** (used in this tutorial) or **/usr** when installed globally using a package manager.

3.2 The Program RNAplot

You can manually add additional annotation to structure drawings using the **RNAplot** program (for information see its **man** page). Here's a somewhat complicated example:

```
$ RNAfold 5S.seq > 5S.fold
$ RNAplot --pre "76 107 82 102 GREEN BFmark 44 49 0.8 0.8 0.8 Fomark \
  1 15 8 RED omark 80 cmark 80 -0.23 -1.2 (pos80) Label 90 95 BLUE Fomark" < 5S.fold
$ gv 5S_ss.ps
```



RNAplot is a very useful tool to color structure layout plots. The **--pre** tag adds PostScript code required to color distinct regions of your molecule. There are some predefined statements with different options for annotations listed below:

i cmark	draws circle around base i
i j c gmark	draw basepair i,j with c counter examples in grey
i j lw rgb omark	stroke segment i...j with linewidth lw and color (rgb)
i j rgb Fomark	fill segment i...j with color (rgb)
i j k l rgb BFmark	fill block between pairs i,j and k,l with color (rgb)
i dx dy (text) Label	adds a textlabel with an offset dx and dy relative to base i

Predefined color options are **BLACK**, **RED**, **GREEN**, **BLUE**, **WHITE** but you can also replace the value to some standard RGB code (e.g. 0 5 8 for lightblue).

To simply add the annotation macros to the **PostScript** file without any actual annotation you can use the following program call

```
$ RNAplot --pre "" < 5S.fold
```

If you now open the structure layout file **5S_ss.ps** with a text editor you'll see the additional macros for **cmark**, **omark**, etc. along with some show synopsis on how to use them. Actual annotations can then be added between the lines

```
\% Start Annotations
```

and

```
\% End Annotations
```


Here, you simply need to add the same string of commands you would provide through the `--pre` option of `RNAplot`.

To see what exactly the alternative structures of our sequence are, we need to predict *suboptimal* structures.

3.3 The Program RNApvmin

The program `RNApvmin` reads a RNA sequence from *stdin* and uses an iterative minimization process to calculate a perturbation vector that minimizes the discrepancies between predicted pairing probabilities and observed pairing probabilities (deduced from given shape reactivities). The experimental SHAPE data has to be present in the file format described above. The application will write the calculated vector of perturbation energies to *stdout*, while the progress of the minimization process is written to *stderr*. The resulting perturbation vector can be interpreted directly and gives useful insights into the discrepancies between thermodynamic prediction and experimentally determined pairing status. In addition the perturbation energies can be used to constrain folding with `RNAfold`:

```
$ RNApvmin rna.shape < rna.seq >vector.csv
$ RNAfold --shape=vector.csv --shapeMethod=W < rna.seq
```

The perturbation vector file uses the same file format as the SHAPE data file. Instead of SHAPE reactivities the raw perturbation energies will be stored in the last column. Since the energy model is only adjusted when necessary, the calculated perturbation energies may be used for the interpretation of the secondary structure prediction, since they indicate which positions require major energy model adjustments in order to yield a prediction result close to the experimental data. High perturbation energies for just a few nucleotides may indicate the occurrence of features, which are not explicitly handled by the energy model, such as posttranscriptional modifications and intermolecular interactions.

3.4 The Program RNAsubopt

`RNAsubopt` calculates all suboptimal secondary structures within a given energy range above the MFE structure. Be careful, the number of structures returned grows exponentially with both sequence length and energy range.

3.4.1 Suboptimal folding

- Generate all suboptimal structures within a certain energy range from the MFE specified by the `-e` option.

```
$ RNAsubopt -e 1 -s < test.seq
CUACGGCGCGCGCCCUUGGCGA   -500    100
.....((((.....)))..   -5.00
....((((.....))).....   -4.80
(((.((((.....)))..)))... -4.20
...((.((.((.....)).)).) -4.10
```

The text output shows an energy sorted list (option `-s`) of all secondary structures within 1 kcal/mol of the MFE structure. Our sequence actually has a ground state structure (-5.70) and three structures within 1 kcal/mol range.

MFE folding alone gives no indication that there are actually a number of plausible structures. Remember that `RNAsubopt` cannot automatically plot structures, therefore you can use the tool `RNAplot`. Note that you CANNOT simply pipe the output of `RNAsubopt` to `RNAplot` using

```
$ RNAsubopt < test.seq | RNAplot
```

You need to manually create a file for each structure you want to plot. Here, for example we created a new file named `suboptstructure.txt`:

```
> suboptstructure-4.20
CUACGGCGCGCGCCCUUGGCGA
(((.((((.....)))..)))...
```

The fasta header is optional, but useful (without it the outputfile will be named rna.ps). The next two lines contain the sequence and the suboptimal structure you want to plot; in this case we plotted the structure with the folding energy of -4.20. Then plot it with

```
$ RNAplot < suboptstructure.txt
```

Note that the number of suboptimal structures grows exponentially with sequence length and therefore this approach is only tractable for sequences with less than 100 nt. To keep the number of suboptimal structures manageable the option `--noLP` can be used, forcing `RNAsubopt` to produce only structures without isolated base pairs. While `RNAsubopt` produces *all* structures within an energy range, `mfold` produces only a few, hopefully representative, structures. Try folding the sequence on the mfold server at <http://mfold.rna.albany.edu/?q=mfold>.

Sometimes you want to get information about unusual properties of the Boltzmann ensemble (the sum of all RNA structures possible) for which no specialized program exists. For example you want to know all fractions of a bacterial mRNA in the Boltzmann ensemble where the Shine-Dalgarno (SD) sequence is unpaired. If the SD sequence is concealed by secondary structure the translation efficiency is reduced.

In such cases you can resort to drawing a representative sample of structures from the Boltzmann ensemble by using the option `-p`. Now you can simply count how many structures in the sample possess the feature you are looking for. This number divided by the size of your sample gives you the desired fraction.

The following example calculates the fraction of structures in the ensemble that have bases 6 to 8 unpaired.

3.4.2 Sampling the Boltzmann Ensemble

- (a) Draw a sample of size 10,000 from the Boltzmann ensemble
- (b) Calculate the desired property by using a perl script

```
$ RNAsubopt -p 10000 < test.seq > tt
$ perl -nle '$h++ if substr($_,5,3) eq "...";
END {print $h/$.}' tt
0.391960803919608
```

A far better way to calculate this property is to use `RNAfold -p` to get the ensemble free energy, which is related to the partition function via $F = -RT \ln(Q)$, for the unconstrained (F_u) and the constrained case (F_c), where the three bases are not allowed to form base pairs (use option `-C`), and evaluate $p_c = \exp((F_u - F_c)/RT)$ to get the desired probability.

So let's do the calculation using `RNAfold`.

```
$RNAfold -p

Input string (upper or lower case); @ to quit
.....1.....2.....3.....4.....5.....6.....7.....8
CUACGCGCGCGCGCCCUUGGCGA
length = 23
CUACGCGCGCGCGCCCUUGGCGA
.....((((.....))).
minimum free energy = -5.00 kcal/mol
.....{,{...|||...}}}.
free energy of ensemble = -5.72 kcal/mol
..... { 0.00 d=4.66}
frequency of mfe structure in ensemble 0.311796; ensemble diversity 6.36
```

Now we have calculated the free ensemble energy of the ensemble over all structures (F_u), in the next step we have to calculate it for the structures using a constraint(F_c).

Following notation has to be used for defining the constraint:

- (a) | : paired with another base

- (b) . : no constraint at all
- (c) x : base must not pair
- (d) < : base i is paired with a base j*i*
- (e) > : base i is paired with a base j*i*
- (f) matching brackets (): base i pairs base j

So our constraint should look like this:

```
.....xxx.....
```

Next call the application with following command and provide the sequence and constraint we just created.

```
$ RNAfold -p -C
```

The output should look like this

```
length = 23
CUACGCGCGGCGCCCUUGGCGA
.....((((...))).
  minimum free energy = -5.00 kcal/mol
.....((((...))).
  free energy of ensemble = -5.14 kcal/mol
.....((((...))). { -5.00 d=0.42}
  frequency of mfe structure in ensemble 0.792925; ensemble diversity 0.79
```

Afterwards evaluate the desired probability according to the formula given before e.g. with a simple perl script.

```
$ perl -e 'print exp(-(5.72-5.14)/(0.00198*310.15))."\n"'
```

You can see that there is a slight difference between the `RNAsubopt` run with 10,000 samples and the `RNAfold` run including all structures.

4 RNA folding kinetics

RNA folding kinetics describes the dynamical process of how a RNA molecule approaches to its unique folded biological active conformation (often referred to as the native state) starting from an initial ensemble of disordered conformations e.g. the unfolded open chain. The key for resolving the dynamical behavior of a folding RNA chain lies in the understanding of the ways in which the molecule explores its astronomically large free energy landscape, a rugged and complex hyper-surface established by all the feasible base pairing patterns a RNA sequence can form. The challenge is to understand how the interplay of formation and break up of base pairing interactions along the RNA chain can lead to an efficient search in the energy landscape which reaches the native state of the molecule on a biologically meaningful time scale.

4.1 RNA2Dfold

RNA2Dfold is a tool for computing the MFE structure, partition function and representative sample structures of κ , λ neighborhoods and projects an high dimensional energy landscape of RNA into two dimensions. Therefore a sequence and two user-defined reference structures are expected by the program. For each of the resulting distance class, the MFE representative, the Boltzmann probabilities and the Gibbs free energy is computed. Additionally, representative suboptimal secondary structures from each partition can be calculated.

```
$ RNA2Dfold -p < 2dfold.inp > 2dfold.out
```

The outputfile `2dfold.out` should look like below, check it out using `less`.

```

CGUCAGCGUGGGAUGCCAGCGUCGCGCCGAAAGGGGCUUGGCGUUUGGUUGUUGAUUCAACGAUCAC
((((((((((((.....))))))..((((((((.....))))))..((((((((.....))))))..((((((((.....))))))..(-30.40)
((((((((((((.....))))))..((((((((.....))))))..((((((((.....))))))..((((((((.....))))))..(-30.40) <ref 1>
..... ( 0.00) <ref 2>
free energy of ensemble = -31.15 kcal/mol
k      1      P(neighborhood) P(MFE in neighborhood) P(MFE in ensemble)      MFE      E_gibbs MFE-structure
0      24      0.29435909      1.00000000      0.29435892      -30.40 -30.40 (((((((((((.....))))))..((((((((.....))))))..((((((((.....))))))..((((((((.....))))))..
1      23      0.17076902      0.47069889      0.08038083      -29.60 -30.06 (((((((((((.....))))))..((((((((.....))))))..((((((((.....))))))..((((((((.....))))))..
2      22      0.03575448      0.37731068      0.01349056      -28.50 -29.10 (((((((((((.....))))))..((((((((.....))))))..((((((((.....))))))..((((((((.....))))))..
2      24      0.00531223      0.42621709      0.00226416      -27.40 -27.93 (((((((((((.....))))))..((((((((.....))))))..((((((((.....))))))..((((((((.....))))))..
3      21      0.00398349      0.29701636      0.00118316      -27.00 -27.75 (((((((((((.....))))))..((((((((.....))))))..((((((((.....))))))..((((((((.....))))))..
3      23      0.00233909      0.26432372      0.00061828      -26.60 -27.42 (((((((((((.....))))))..((((((((.....))))))..((((((((.....))))))..((((((((.....))))))..
[...]
```

For visualizing the output the ViennaRNA Package includes two scripts `2Dlandscape_pf.gri`, `2Dlandscape_mfe.gri` located in `VRP/share/ViennaRNA/`. `gri` (a language for scientific graphics programming) is used to create a colored postscript plot. We use the partition function script to show the free energies of the distance classes (graph below, left):

```
$ gri ../Progs/VRP/share/ViennaRNA/2Dlandscape_pf.gri 2dfold.out
```

Compare the output file with the colored plot and determine the MFE minima with corresponding distance classes. For easier comparison the outputfile of `RNA2Dfold` can be sorted by a simple sort command. For further information regarding sort use the `--help` option.

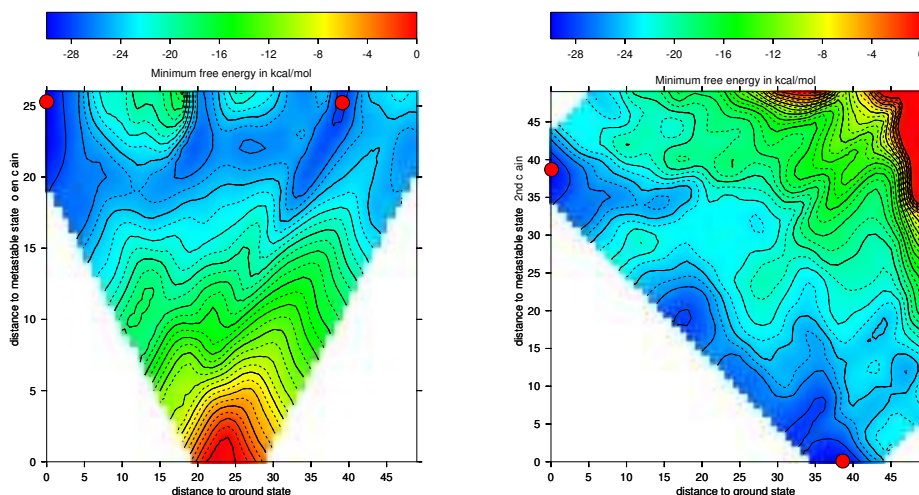
```
$ sort -k6 -n 2dfold.out > sort.out
```

Now we choose the structure with the lowest energy besides our startstructure, replace the open chain structure from our old input with that structure and repeat the steps above with our new values

- run `RNA2Dfold`
- plot it using `2Dlandscape_pf.gri`

The new projection (right graph) shows the two major local minima which are separated by 39 bp (red dots in figure below) and both are likely to be populated with high probability. The landscape gives an estimate of the energy barrier separating the two minima (about -20 kcal/mol).

The red dots mark the distance from open chain to the MFE structure respectively the distance from the 2nd best structure to the MFE. Note that the red dots were manually added to the image afterwards so don't panic if you don't see them in your `gri` output.



4.2 barriers & treekin

The following assumes you have the barriers and treekin programs installed. If not, the current release can be found at <http://www.tbi.univie.ac.at/RNA/Barriers/>. Installation proceeds as shown for the ViennaRNA Package in section 2.4. One problem that often occurs during treekin installation is the dependency on `blas` and `lapack` packages which is not carefully checked. For further information according to the barriers and treekin program also see the website.

4.2.1 A short recall on howto install/compile a program

- (a) Get the barriers source from <http://www.tbi.univie.ac.at/RNA/Barriers/>
- (b) extract the archive and go to the directory


```
$ tar -xzf Barriers-1.5.2.tar.gz
$ cd Barriers-1.5.2
```
- (c) use the `--prefix` option to install in your Progs directory


```
$ ./configure --prefix=$HOME/Tutorial/Progs/barriers-1.5.2
```
- (d) make install


```
$ make
$ make install
```

Now barriers is ready to use. Apply the same steps to install treekin. **Note:** Copy the barriers and treekin binaries to your bin folder or add the path to your PATH variable.

4.2.2 Calculate the Barrier Tree

```
$ echo UCCACGGCUGUAGUGGAUAACGGC | RNAsubopt --noLP -s -e 10 > barseq.sub
$ barriers -G RNA-noLP --bsize --rates < barseq.sub > barseq.bar
```

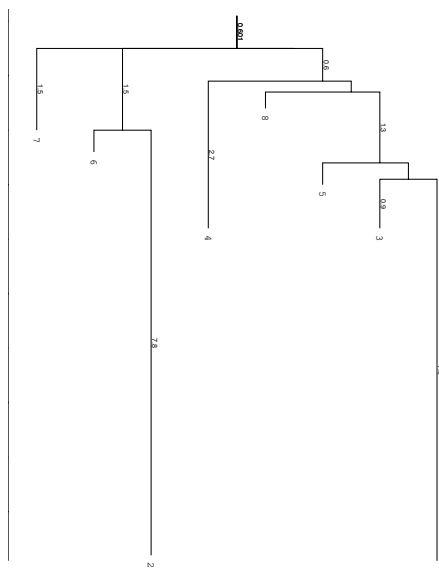
You can restrict the number of local minima using the **barriers** command-line option `--max` followed by a number. The option `-G RNA-noLP` instructs barriers that the input consists of RNA secondary structures without isolated basepairs. `--bsize` adds size of the gradient basins and `--rates` tells barriers to compute rates between macro states/basins for use with treekin. Another useful options is `--minh` to print only minima with a barrier $> dE$. Look at the output file `less -S barseq.bar`. Use the arrow keys to navigate.

	UCCACGGCUGUAGUGGAUAACGGC								
1	(((((.....))))).	-6.90	0	10.00	115	0	-7.354207	23	-7.012023
2(((((((.....)))))))	-6.80	1	9.30	32	58	-6.828221	38	-6.828218
3	(((((.....))))).	-0.80	1	0.90	1	10	-0.800000	9	-1.075516
4(((.....)))..	-0.80	1	2.70	5	37	-0.973593	11	-0.996226
5	0.00	1	0.40	1	14	-0.000000	26	-0.612908
6(((.....)))	0.60	2	0.40	1	22	0.600000	3	0.573278
7(((((((.....))))))	1.00	1	1.50	1	95	1.000000	2	0.948187
8	..(((.....)))..	1.40	1	0.30	1	30	1.400000	2	1.228342

The first row holds the input sequence, the successive list the local minima ascending in energy. The meaning of the first 5 columns is as follows

- (a) label (number) of the local minima (1=MFE)
- (b) structure of the minimum
- (c) free energy of the minimum
- (d) label of deeper local minimum the current minimum merges with (note that the MFE has no deeper local minimum to merge with)
- (e) height of the energy barrier to the local minimum to merge with
- (f) numbers of structures in the basin we merge with
- (g) number of basin which we merge to
- (h) free energy of the basin
- (i) number of structures in this basin using gradient walk
- (j) gradient basin (consisting of all structures where gradientwalk ends in the minimum)

4.2.3 Calculate The Barrier Tree

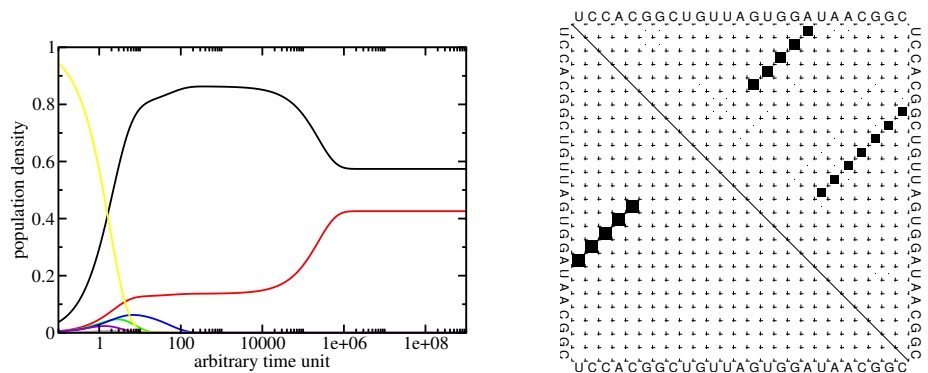


barriers produced two additional files, the PostScript file **tree.eps** which represents the basic information of the **barseq.bar** file visually (look at the file e.g. **gv tree.eps**) and a text file **rates.out** which holds the matrix of transition probabilities between the local minima.

4.2.4 Simulating the Folding Kinetics

The program **treekin** is used to simulate the evolution over time of the population densities of local minima starting from an initial population density distribution p_0 (given on the command-line) and the transition rate matrix in the file **rates.out**.

```
$ treekin -m I --p0 5=1 < barseq.bar | xmgrace -log x -nxy -
```



The simulation starts with all the population density in the open chain (local minimum 5, see **barseq.bar**). Over time the population density of this state decays (yellow curve) and other local minima get populated. The simulation ends with the population densities of the thermodynamic equilibrium in which the MFE (black curve) and local minimum 2 (red curve) are the only ones populated. (Look at the dot plot of the sequence created with **RNAsubopt** and **RNAfold**!)

5 Sequence Design

5.1 The Program RNAinverse

RNAinverse searches for sequences folding into a predefined structure, thereby inverting the folding algorithm. Input consists of the target structures (in dot-bracket notation) and a starting sequence, which is optional.

Lower case characters in the start sequence indicate fixed positions, i.e. they can be used to add sequence constraints. 'N's in the starting sequence will be replaced by a random nucleotide. For each search the best sequence found and its Hamming distance to the start sequence are printed to *stdout*. If the search was unsuccessful a structure distance to the target is appended.

By default the program stops as soon as it finds a sequence that has the target as MFE structure. The option **-Fp** switches RNAinverse to the partition function mode where the probability of the target structure $\exp(-E(S)/RT)/Q$ is maximized. This tends to produce sequences with a more well-defined structure. This probability is written in dot-brackets after the found sequence and Hamming distance. With the option **-R** you can specify how often the search should be repeated.

5.1.1 Sequence Design

- (a) Prepare an input file `inv.in` containing the target structure and sequence constraints

```
(((((...)))...))
NNNgNNNNNNNNNaNNN
```

- (b) Design sequences using RNAinverse

```
$ RNAinverse < inv.in
GGUGUUGGAUCCGAaACC 5

$ RNAinverse -R5 -Fp < inv.in
GGUGUGAACCCUCGaACC 5
GGCgCCCUUUUGGgAGCC 12 (0.967418)
CUCgAUCUCACGAUaGGG 6
GGCgCCCGAAAGGgAGCC 13 (0.967548)
GUUgAGCCCAUGCuaAGC 6
GGCgCCCUUAUGGgAGCC 10 (0.967418)
CGGgUGUUGUGACAaCCG 5
GCGgGUCGAAAGGCaCGC 12 (0.925482)
GCCgUAUCCGGGUGaGGC 6
GGCgCCCUUUUGGgAGCC 13 (0.967418)
```

The output consists of the calculated sequence and the number of mutations needed to get the MFE-structure from the start sequence (start sequence not shown). Additionally, with the partition function folding (**-Fp**) set, the second output is another refinement so that the ensemble prefers the MFE and folds into your given structure with a distinct probability, shown in brackets.

Another useful program for inverse folding is **RNA designer**, see <http://www.rnasoft.ca/>. RNA Designer takes a secondary structure description as input and returns an RNA strand that is likely to fold in the given secondary structure.

The **sequence design** application of the **ViennaRNA Design Webservices**, see <http://nibiru.tbi.univie.ac.at/rnadesign/index.html> uses a different approach, allowing for more than one secondary structure as input. For more detail read the online Documentation and the next section of this tutorial.

5.2 switch.pl

The `switch.pl` script can be used to design bi-stable structures, i.e. structures with two almost equally good foldings. For two given structures there are always a lot of sequences

compatible with both structures. If both structures are reasonably stable you can find sequences where both target structures have almost equal energy and all other structures have much higher energies. Combined with RNAsubopt, barriers and treekin, this is a very useful tool for designing RNAswitches.

The input requires two structures in dot-bracket notation and additionally you can add a sequence. It is also possible to calculate the switching function at two different temperatures with option `-T` and `-T2`.

5.2.1 Designing a Switch

Now we try to create an RNA switch using `switch.pl`. First we create our inputfile, then invoke the program using ten optimization runs (`-n 10`) and do not allow lonely pairs. Write it out to `switch.out`

```
switch.in
(((((((.....))))))....(((((((.....))))))
((((((((((((((((.....))))))))))))))....
```

```
$ switch.pl -n 10 --noLP < switch.in > switch.out
```

`switch.out` should look similar like this, the first block represents our bi-stable structures in random order, the second block shows the resulting sequences ordered by their score.

```
$ less switch.out

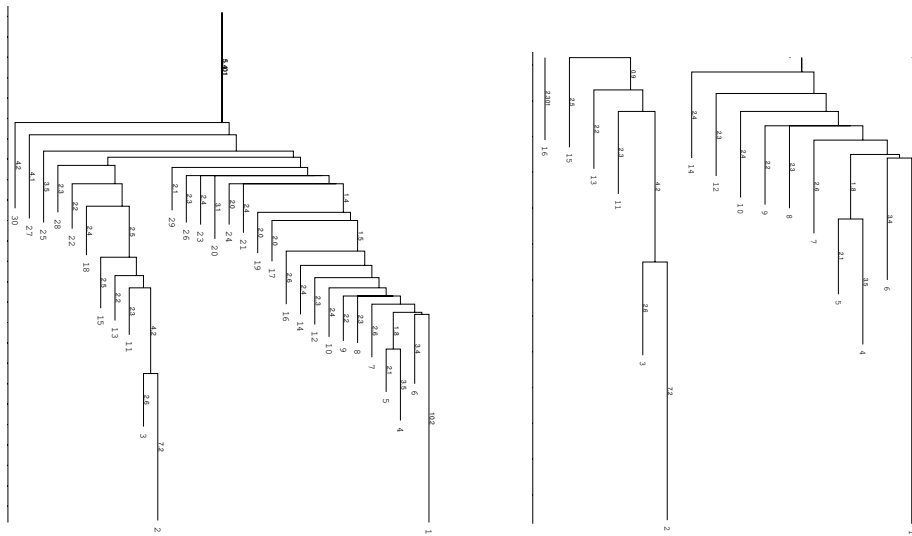
GGGUGGACGUUUCGGUCCAUCUACGGACUGGGGCGUUUACCUAGUCC 0.9656
CAUUUGGCUUGUGUGUCGAAUGGCCCGGUACGUAGGCUAAAUGUACCG 1.2319
GGGGGUGGCGUUCACACCCUCUAAUUGGUGUGGAUGUGCUUUCUACACU 1.1554
[...]
the resulting sequences are:
CAUUUGGCUUGUGUGUCGAAUGGCCCGGUACGUAGGCUAAAUGUACCG 1.2319
GGGGGUGGCGUUCACACCCUCUAAUUGGUGUGGAUGUGCUUUCUACACU 1.1554
CGGGUUGUAAACUGGAUAGCCUGGAAACUGUUUGGUUGUAAUCCGAACAG 1.0956
[...]
```

Given all 10 suggestions in our `switch.out`, we select the one with the best score with some command line tools to use it as an RNAsubopt input file and build up the barriers tree.

```
$ tail -10 switch.out | awk '{print($1)}' | head -n 1 > subopt.in
$ RNAsubopt --noLP -s -e 25 < subopt.in > subopt.out
$ barriers -G RNA-noLP --bsize --rates --minh 2 --max 30 < subopt.out > barriers.out
```

`tail -10` cuts the last 10 lines from the `switch.out` file and pipes them into an `awk` script. The function `print($1)` echoes only the first column and this is piped into the `head` program where the first line, which equals the best scored sequence, is taken and written into `subopt.in`. Then `RNAsubopt` is called to process our sequence and write the output to another file which is the input for the barriers calculation.

Below you find an example of the barrier tree calculation above done with the right settings (connected root) on the left side and the wrong `RNAsubopt -e` value on the right. Keep in mind that `switch.pl` performs a stochastic search and the output sequences are different every time because there are a lot of sequences which fit the structure and `switch` calculates a new one everytime. Simply try to make sure.

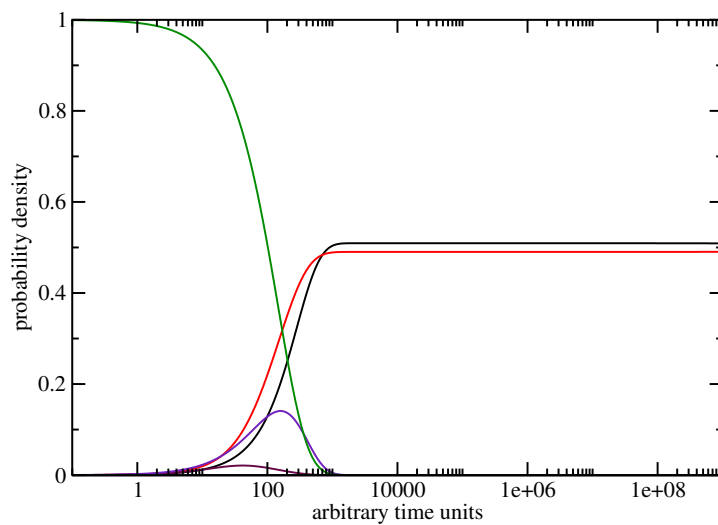


left: Barriers tree as it should look like, all branches connected to the main root right: disconnected tree due to a too low energy range (-e) parameter set in RNAsubopt.

Be careful to set the range -e high enough, otherwise we get a problem when calculation the kinetics using treekin. Every branch should be somehow connected to the main root of the tree. Try -e 20 and -e 30 to see the difference in the trees and choose the optimal value. By using --max 30 we shorten our tree to focus only on the lowest minima. We then select a branch preferably outside of the two main branches, here branch 30 (may differ from your own calculation). Look at the barrier tree to find the best branch to start and replace 30 by the branch you would choose. Now use treekin to plot concentration kinetics and think about the graph you just created.

```
$ treekin -m I --p0 30=1 < barriers.out > treekin.out
$ xmgrace -log x -nxy treekin.out
```

The graph could look like the one below, remember everytime you use **switch.pl** it can give you different sequences so the output varies too. Here the one from the example.



6 RNA-RNA Interactions

A common problem is the prediction of binding sites between two RNAs, as in the case of miRNA-mRNA interactions. Following tools of the **ViennaRNA Package** can be used to calculate base pairing probabilities.

6.1 The Program RNAcofold

RNAcofold works much like RNAfold but uses two RNA sequences as input which are then allowed to form a dimer structure. In the input the two RNA sequences should be concatenated using the ‘&’ character as separator. As in RNAfold the -p option can be used to compute partition function and base pairing probabilities.

Since dimer formation is concentration dependent, RNAcofold can be used to compute equilibrium concentrations for all five monomer and (homo/hetero)-dimer species, given input concentrations for the monomers (see the **man** page for details).

6.1.1 Two Sequences one Structure

- (a) Prepare a sequence file (**t.seq**) for input that looks like this

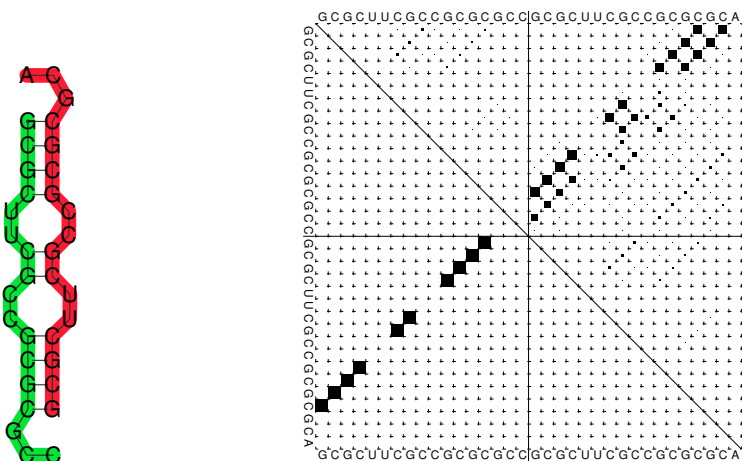
```
>t
GCGCUUCGCCGCGGCC&GCGCUUCGCCGCGCGCA
```

- (b) Compute the MFE and the ensemble properties

- (c) Look at the generated PostScript files **t.ss.ps** and **t.dp.ps**

```
$ RNAcofold -p < t.seq
>t
GCGCUUCGCCGCGGCC&GCGCUUCGCCGCGCGCA
((((((...(((...&))))))...))... (-17.70)
((((...{(...(((...&))))...}),...))... [-18.26]
frequency of mfe structure in ensemble 0.401754 , delta G binding= -3.95
```

6.1.2 Secondary Structure Plot and Dot Plot



In the dot plot a cross marks the chain break between the two concatenated sequences.

6.2 Concentration Dependency

Cofolding is an intermolecular process, therefore whether duplex formation will actually occur is concentration dependent. Trivially, if one of the molecules is not present, no dimers are going to be formed. The partition functions of the molecules give us the equilibrium constants:

$$K_{AB} = \frac{[AB]}{[A][B]} = \frac{Z_{AB}}{Z_A Z_B}$$

with these and mass conservation, the equilibrium concentration of homodimers, heterodimers and monomers can be computed in dependence of the start concentrations of the two molecules. This is most easily done by creating a file with the initial concentrations of molecules *A* and *B* in two columns:

$$\begin{array}{cc} [a_1]([mol/l]) & [b_1]([mol/l]) \\ [a_2]([mol/l]) & [b_2]([mol/l]) \\ \vdots & \vdots \\ [a_n]([mol/l]) & [b_n]([mol/l]) \end{array}$$

6.2.1 Concentration Dependency

- (a) Prepare a concentration file for input with this little perl script

```
$ perl -e '$c=1e-07; do {print "$c\t$c\n"; $c*=1.71;} while $c<0.2' > concfile
```

This script creates a file displaying values from 1e-07 to just below 0.2, with 1.71-fold steps in between. For convenience, concentration of molecule A is the same as concentration of molecule B in each row. This will facilitate visualization of the results.

- (b) Compute the MFE, the ensemble properties and the concentration dependency of hybridization.

```
$ RNAcofold -f concfile < t.seq > cofold.out
```

- (c) Look at the generated output with

```
$ less cofold.out
```

```
[...]
Free Energies:
AB          AA          BB          A          B
-18.261023  -17.562553  -18.274376  -7.017902   -7.290237
Initial concentrations
A          B          AB          AA          BB          A          B
1e-07      1e-07      0.00003     0.00002     0.00002     0.49994     0.49993
[...]
```

The five different free energies were printed out first, followed by a list of all the equilibrium concentrations, where the first two columns denote the initial (absolute) concentrations of molecules *A* and *B*, respectively. The next five columns denote the equilibrium concentrations of dimers and monomers, relative to the total particle number. (Hence, the concentrations don't add up to one, except in the case where no dimers are built – if you want to know the fraction of particles in a dimer, you have to take the relative dimer concentrations times 2). Since relative concentrations of species depend on two independent values - initial concentration of *A* as well as initial concentration of *B* - it is not trivial to visualize the results. For this reason we used the same concentration for *A* and for *B*. Another possibility would be to keep the initial concentration of one molecule constant. As an example we show the following plot of *t.seq*. Now we use some commandline tools to render our plot. We use `tail -n +11` to show all lines starting with line 11 (1-10 are cut) and pipe it into an `awk` command, which prints every column but the first from our input. This is then piped to `xmgrace`. With `-log x -nxy` - we tell it to plot the x axis in logarithmic scale and to read data file in X Y1 Y2 ... format.

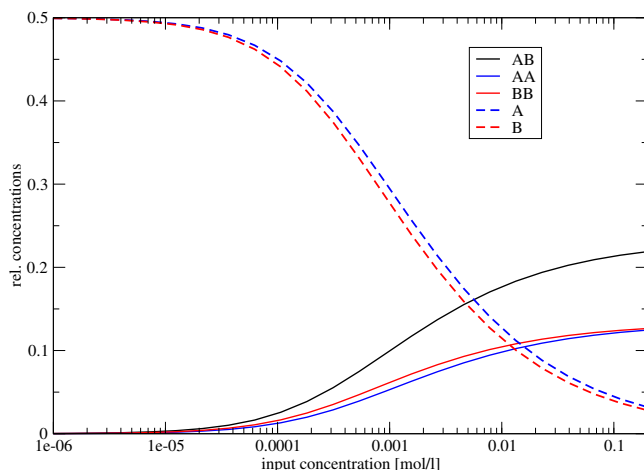
```
$ tail -n +11 cofold.out | awk '{print $2, $3, $4, $5, $6, $7}' | xmgrace -log x -nxy -
```

6.2.2 Concentration Dependency plot

$$\Delta G_{\text{binding}} = -5.01 \text{ kcal/mol}$$

```
sequences:GCGCUUCGCCGCGCGCG&GCGCUUCGCCGCGCGCG
```

Since the two sequences are almost identical, the monomer and homo-dimer concentrations behave very similarly. In this example, at a concentration of about 1 mmol 50% of the molecule is still in monomer form.



6.3 Finding potential binding sites with RNAduplex

If the sequences are very long (many kb) `RNAfold` is too slow to be useful. The `RNAduplex` program is a fast alternative, that works by predicting *only* intermolecular base pairs. It's almost as fast as simple sequence alignment, but much more accurate than a `BLAST` search. The example below searches the 3' UTR of an mRNA for a miRNA binding site.

6.3.1 Binding site prediction with RNAduplex

The file `duplex.seq` contains the 3'UTR of NM_024615 and the microRNA mir-145.

```
$ RNAduplex < duplex.seq
>NM_024615
>hsa-miR-145
.(((((((.....((((((((((.&)))))))))))))))). 34,57 : 1,19 (-21.90)
```

Most favorable binding has an interaction energy of -21.90 kcal/mol and pairs up on positions 34-57 of the UTR with positions 1-22 of the miRNA.

`RNAduplex` can also produce alternative binding sites, e.g. running `RNAduplex -e 10` would list all binding sites within 10 kcal/mol of the best one.

Since `RNAduplex` forms only intermolecular pairs, it neglects the competition between intramolecular folding and hybridization. Thus, it is recommended to use `RNAduplex` as a pre-filter and analyse good `RNAduplex` hits additionally with `RNAfold` or `RNAup`. Using the example above, running `RNAup` will yield:

```
$ RNAup -b < duplex.seq

>NM_024615
>hsa-miR-145
(((((((.&))))))) 50,56 : 1,7 (-8.41 = -9.50 + 0.69 + 0.40)
GCUUGGAU&GUCCAGU
RNAup output in file: hsa-miR-145_NM_024615_w25_u1.out
```

The free energy of the duplex is -9.50 kcal/mol and shows a discrepancy to the structure and energy value computed by `RNAduplex` (differences may arise from the fact that `RNAup` computes partition functions rather than optimal structures). However, the total free energy of binding is less favorable (-8.41 kcal/mol), since it includes the energetic penalty for opening

You can also run **RNAfold** on the example to see the complete structure after hybridization (neither **RNAduplex** nor **RNAup** produce structure drawings). Note however, that the input format for **RNAfold** is different. An input file suitable for **RNAfold** has to be created from the **duplex.seq** file first (use any text editor).

[illegible]

7.1 The Program RNAalifold

RNAalifold generalizes the folding algorithm for sequence alignments, treating the entire alignment as a single “generalized sequence”. To assign an energy to a structure on such a generalized sequence, the energy is simply averaged over all sequences in the alignment. This average energy is augmented by a covariance term, that assigns a bonus or penalty to every possible base pair (i, j) based on the sequence variation in columns i and j of the alignment.

Compensatory mutations are a strong indication of structural conservation, while consistent mutations provide a weaker signal. The covariance term used by **RNAalifold** therefore assigns a bonus of 1 kcal/mol to each consistent and 2 kcal/mol for each compensatory mutation. Sequences that cannot form a standard base pair incur a penalty of -1 kcal/mol. Thus, for every possible consensus pair between two columns i and j of the alignment a covariance score C_{ij} is computed by counting the fraction of sequence pairs exhibiting consistent and compensatory mutations, as well as the fraction of sequences that are inconsistent with the pair. The weight of the covariance term relative to the normal energy function, as well as the penalty for inconsistent mutations can be changed via command line parameters.

Apart from the covariance term, the folding algorithm in **RNAalifold** is essentially the same as for single sequence folding. In particular, folding an alignment containing just one sequence will give the same result as single sequence folding using **RNAfold**. For N sequences of length n the required CPU time scales as $\mathcal{O}(N \cdot n^2 + n^3)$ while memory requirements grow as the square of the sequence length. Thus **RNAalifold** is in general faster than folding each sequence individually. The main advantage, however, is that the accuracy of consensus structure predictions is generally much higher than for single sequence folding, where typically only between 40% and 70% of the base pairs are predicted correctly.

Apart from prediction of MFE structures **RNAalifold** also implements an algorithm to compute the partition function over all possible (consensus) structures and the thermodynamic equilibrium probability for each possible pair. These base pairing probabilities are useful to see structural alternatives, and to distinguish well defined regions, where the predicted structure is most likely correct, from ambiguous regions.

As a first example we’ll produce a consensus structure prediction for the following four tRNA sequences.

```
$ cat four.seq

>M10740 Yeast-PHE
GCGGAUUUAGCUCAGUUGGGAGAGCGCCAGACUGAAGAUAUUGGAGGUCCUGUGUUCGAUCCACAGAAUUCGCA
>K00349 Drosophila-PHE
GCCGAAAUAGCUCAGUUGGGAGAGCGUUAAGACUGAAGAUCAAAGGUCCCCGGUCAAUCCCGGGUUUCGGCA
>K00283 Halobacterium volcanii Lys-tRNA-1
GGGCCGGUAGCUCAUUUAGGCAGAGCGUCUGACUCUUAUAUCAGACGGUCGCGUGUUCGAAUCCGCGUCCGGCCCA
>AF346993
CAGAGUGUAGCUUAACACAAAGCACCCAACUUAACUUAAGGAGAUUUCAACUUAACUUGACCGCUCUGA
```

RNAalifold uses aligned sequences as input. Thus, our first step will be to align the sequences. We use **clustalw2** in this example, since it’s one of the most widely used alignment programs and has been shown to work well on structural RNAs. Other alignment programs can be used (including programs that attempt to do structural alignment of RNAs), but the resulting multiple sequence alignment must be in **Clustal** format. Get **clustalw2** and install it as you have done it with the other packages: <http://www.clustal.org/clustal2>

7.1.1 Consensus Structure from related Sequences

- Prepare a sequence file (use file **four.seq** and copy it to your working directory)
- Align the sequences
- Compute the consensus structure from the alignment
- Inspect the output files **alifold.out**, **alirna.ps**, **alidot.ps**
- For comparison fold the sequences individually using **RNAfold**

```
$ clustalw2 four.seq > four.out
```

Clustalw2 creates two more output files, `four.aln` and `four.dnd`. For RNAalifold you need the `.aln` file.

```
$ RNAalifold -p four.aln
$ RNAfold -p < four.seq
RNAalifold output:
__GCCGAUGUAGCUCAGUUGGG_AGAGCGCCAGACUGAAAAUCAGAAGGUCCGUGUUCAAUCCACGGAUCCGGCA__
..(((((((.....))))).((((.....))))).((((.....))))).((((.....))))).((((.....))))).
  minimum free energy = -15.12 kcal/mol (-13.70 + -1.43)
..((((((({.....))))).((((.....))))).((((.....))))).((((.....))))).((((.....))))).
  free energy of ensemble = -15.75 kcal/mol
  frequency of mfe structure in ensemble 0.361603
..(((((((.....))))).((((.....))))).((((.....))))).((((.....))))).((((.....))))). -15.20 {-13.70 + -1.50}
```

RNAfold output:

```
>M10740 Yeast-PHE
GCGGAUUUAGCUCAGUUGGGAGAGCGCCAGACUGAAGAUUUGGAGGUCCUGUGUUCGAUCCACAGAAUUCGCA
(((((((.....(((((((.....))))).))))).))))).))))).))))). (-21.60)
((((((({.....,{.....(((((((.....))))).))))).))))).))))).))))). [-23.20]
(((((((.....(((((((.....))))).))))).))))).))))).))))). {-20.00 d=9.63}
  frequency of mfe structure in ensemble 0.0744065; ensemble diversity 15.35
>K00349 Drosophila-PHE
[...]
```

The output contains a consensus sequence and the consensus structure in dot-bracket notation. The consensus structure has an energy of -15.12 kcal/mol, which in turn consists of the average free energy of the structure -13.70 kcal/mol and the covariance term -1.43 kcal/mol. The strongly negative covariance term shows that there must be a fair number of consistent and compensatory mutations, but in contrast to the average free energy it's not meaningful in the biophysical sense.

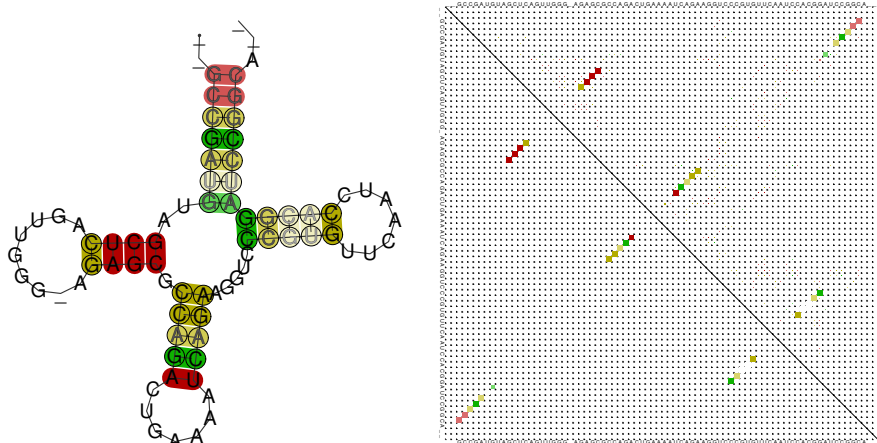
Compare the predicted consensus structure with the structures predicted for the individual sequences using `RNAfold`. How often is the correct “clover-leaf” shape predicted?

For better visualization, a structure annotated alignment or color annotated structure drawing can be generated by using the `--aln` and `--color` options of `RNAalifold`.

```
$ RNAalifold --color --aln four.aln
$ gv aln.ps &
$ gv alirna.ps &
```

7.1.2 RNAalifold Output Files

```
4 sequence; length of alignment 78
alifold output
   6   72   0  99.8%   0.007 GC:2   GU:1   AU:1
  33   43   0  98.9%   0.033 GC:2   GU:1   AU:1
  31   45   0  99.0%   0.030 CG:3   UA:1
  15   25   0  98.9%   0.045 CG:3   UA:1
   5   73   1  99.7%   0.008 CG:2   GC:1
  13   27   0  99.1%   0.042 CG:4
  14   26   0  99.1%   0.042 UA:4
   4   74   1  99.5%   0.015 CG:3
[...]
```

The last output file produced by `RNAalifold -p`, named `alifold.out`, is a plain text file with detailed information on all plausible base pairs sorted by the likelihood of the pair. In the example above we see that the pair (6, 72) has no inconsistent sequences, is predicted almost with probability 1, and occurs as a GC pair in two sequences, a GU pair in one, and a AU pair in another.

`RNAalifold` automatically produces a drawing of the consensus structure in Postscript format and writes it to the file `alirna.ps`. In the structure graph consistent and compensatory mutations are marked by a circle around the variable base(s), i.e. pairs where one pairing partner is encircled exhibit consistent mutations, whereas pairs supported by compensatory mutations have both bases marked. Pairs that cannot be formed by some of the sequences are shown gray instead of black. In the example given, many pairs show such inconsistencies. This is because one of the sequences (AF346993) is not aligned well by `clustalw`.

Note, that subsequent calls to `RNAalifold` will overwrite any existing output `alirna.ps` (`alidot.ps`, `alifold.out`) files in the current directory. Be sure to rename any files you want to keep.

7.1.3 Structure predictions for the individual sequences

The consensus structure computed by `RNAalifold` will contain only pairs that can be formed by most of the sequences. The structures of the individual sequences will typically have additional base pairs that are not part of the consensus structure. Moreover, ncRNA may exhibit a highly conserved core structure while other regions are more variable. It may therefore be desirable to produce structure predictions for one particular sequence, while still using covariance information from other sequences.

This can be accomplished by first computing the consensus structure for all sequences using `RNAalifold`, then folding individual sequences using `RNAfold -C` with the consensus structure as a constraint. In constraint folding mode `RNAfold -C` allows only base pairs to form which are compatible with the constraint structure. This resulting structure typically contains most of the constraint (the consensus structure) plus some additional pairs that are specific for this sequence.

7.1.4 Refolding Individual Sequences

The `refold.pl` (find it in the Progs folder) script removes gaps and maps the consensus structure to each individual sequence.

```
$ RNAalifold RNaseP.aln > RNaseP.alifold
$ gv alirna.ps
$ refold.pl RNaseP.aln RNaseP.alifold | head -3 > RNaseP.cfold
$ RNAfold -C --noLP < RNaseP.cfold > RNaseP.refold
$ gv E-coli_ss.ps
```

If you compare the refolded structure (`E-coli_ss.ps`) with the structure you get by simply folding the E.coli sequence in the RNaseP.seq file (`RNAfold --noLP`) you find a clear rearrangement.

In cases where constrained folding results in a structure that is very different from the consensus, or if the energy from constrained folding is much worse than from unconstrained folding, this may indicate that the sequence in question does not really share a common structure with the rest of the alignment or is misaligned. One should then either remove or re-align that sequence and recompute the consensus structure.

Note that since RNase P forms sizable pseudo-knots, a perfect prediction is impossible in this case.

8 Structural Alignments

8.1 Manually correcting Alignments

As the tRNA example above demonstrates, sequence alignments are often unsuitable as a basis for determining consensus structures. As a last resort, one may always try manually correcting an alignment. Sequence editors that are structure-aware may help in this task. In particular the SARSE <http://sarse.kvl.dk/> editor, and the `ralee-mode` for emacs <http://personalpages.manchester.ac.uk/staff/sam.griffiths-jones/software/ralee/> are useful.

After downloading the `ralee`-files extract them and put them in a folder called `~/Tutorial/Progs/ralee`. Now read the `OOREADME` file and follow the instructions. If you don't find an ".emacs" file in your home directory execute the following command to copy it from the Data directory.

```
$ cp Data/dot.emacs ~/
```

Next try correcting the `ClustalW` generated alignment (`four.aln`) from the example above. For this we first have to convert it to the Stockholm format. Fortunately the formats are similar. Make a copy of the file add the correct header line and the consensus structure from `RNAalifold`:

```
$ cp four.aln four.stk
$ emacs four.stk
.....
$ cat four.stk
```

The final alignment should look like:

```
# STOCKHOLM 1.0

K00349      --GCCGAAAUAGCUCAGUUGGG--AGAGCGUUAAGACUGAAGAUCAAAGGUCCCGGUUCAAUCCCGGGUUUCGGCA--
K00283      GGGCCG--GUAGCUCAUUUAGGCAGAGCGUCUGACUCUUAUCAGAGCGUCGCGUUCGAAUC--GCGUCGGGCCCA
M10740      --GCCGAUUUAGCUCAGUUGGG--AGAGCGCCAGACUGAAGAUUUGGAGGUCCUGUUCGAAUCCAGAAUUCGCA--
AF346993    --CAGAGUGUAGCUUAAAC---ACAAAGCAACCAACUUACUUAGGAGAUUUAACUUAACUUGAOCGCCUCUGA---
#=GC SS_cons ..(((((((.....))))).((((.....))))).((((.....))))).((((.....))))).((((.....))))..
//
```

Now use the functions under the edit menu to improve the alignment, the coloring by structure should help to highlight misaligned positions.

8.2 Automatic structural alignments

Next, we'll compute alignments using two structural alignment programs: `LocARNA` and `T-Coffee`. `LocARNA` is an implementation of the Sankoff algorithm for simultaneous folding and alignment (i.e. it will generate both alignment and consensus structure). `T-Coffee` uses a progressive alignment algorithm.

Download `LocARNA` from <http://www.bioinf.uni-freiburg.de/Software/LocARNA/>, extract and install it in your `Progs` folder and eventually add it to your path variable or copy it into the corresponding directory.

Both programs can read the fasta file `four.seq`.

```
$ mlocarna --alifold-consensus-dp four.seq
[...]
M10740          GCGGAUUUAGCUCAGUUGGG-AGAGCGCCAGACUGAAGAUUUGGAGGUCCUGUGUUCGAUCCACAGAAUUCGCA
K00349          GCCGAAAUAGCUCAGUUGGG-AGAGCGUUAGACUGAAGAUCAAAGGUCCCGGUUCAAUCCCGGUUUCGGCA
K00283          GGGCCGGUAGCUCAUUUAGGCAGAGCGUCUGACUCUAAUCAGACGGUCGCGUGUUCGAAUCGCGUCCGGCCCA
AF346993        CAGAGUGUAGCUAAC---ACAAAGCACCCAACUACACUUAGGAGAUU-UCAACUUA-CUUGACCGCUCUGA
alifold         ((((((((((((.....))))).((((.....))))).(((.....))))).(((.....))))).
(-52.53 = -21.58 + -30.95)
```

8.2.1 Install T-Coffee

Get T-Coffee from the github page <https://github.com/cbcrg/tcoffee>. There is a detailed information how you should download and install the software in the given README.md. Go to the `downloads` directory and use the provided installer by typing

```
$ cd Tutorial/downloads
$ git clone git@github.com:cbcrg/tcoffee.git tcoffee
$ cd tcoffee/compile/
$ make t_coffee
$ cp t_coffee ~/Tutorial/Progs/
```

Afterwards align the `four.seq` using `t_coffee` and compare the output with the one given by LocARNA.

```
$ t_coffee four.seq > t_coffee.out
```

```
[t_coffee.out]
CLUSTAL FORMAT for T-COFFEE 20150925_14:18 [http://www.tcoffee.org] [MODE: ],
CPU=0.00 sec, SCORE=739, Nseq=4, Len=74
```

```
M10740          GCGGAUUUAGCUCAGUU-GGGAGAGCGCCAGACUGAAGAUUUGGAGGUCC
K00349          GCCGAAAUAGCUCAGUU-GGGAGAGCGUUAGACUGAAGAUCAAAGGUCC
K00283          GGGCCGGUAGCUCAUUUAGGCAGAGCGUCUGACUCUAAUCAGACGGUCG
AF346993        CAGAGUGUAGCUAAC---ACAAAGCACCCAACUACACUUAGGAGAUUU
                ***** *      * ***      ***      *      * *

M10740          UGUGUUCGAUCCACAGAAUUCGCA
K00349          CCGGUUCAAUCCCGGUUUCGGCA
K00283          CGUGUUCGAAUCGCGUCCGGCCCA
AF346993        CAACUUAACUUGACCG--CUCUGA
                **                *
```

Use RNAalifold to predict structures for all your alignments (ClustalW, handcrafted, T-Coffee, and LocARNA) and compare them. The handcrafted and LocARNA alignments should be essentially perfect.

Other interesting approaches to structural alignment include `CMfinder`, `dynalign`, and `stemloc`.

9 Noncoding RNA gene prediction

Prediction of ncRNAs is still a challenging problem in bioinformatics. Unlike protein coding genes, ncRNAs do not have any statistically significant features in primary sequences that could be used for reliable prediction. A large class of ncRNAs, however, depend on a defined secondary structure for their function. As a consequence, evolutionarily conserved secondary structures can be used as characteristic signal to detect ncRNAs. All currently available programs for *de novo* prediction make use of this principle and are therefore, by construction, limited to structured RNAs.

9.0.1 Programs to predict structural RNAs

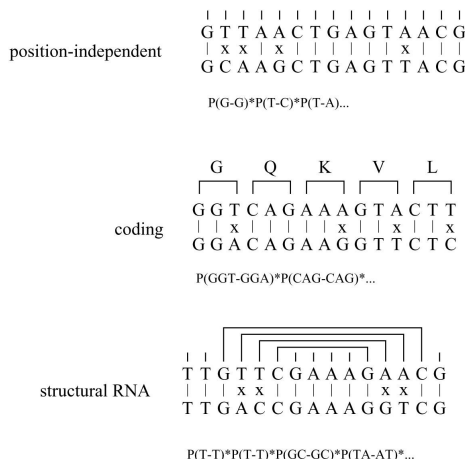
- `QRNA` (Eddy & Rivas, 2001)
- `ddbRNA` (di Bernardo, Down & Hubbard, 2003)
- `MSARi` (Coventry, Kleitman & Berger, 2004)

- AlifoldZ (Washietl & Hofacker, 2004)
- RNAz (Washietl, Hofacker & Stadler, 2005)
- EvoFold (Pedersen et al, 2006)

9.1 QRNA

QRNA analyzes pairwise alignments for characteristic patterns of evolution. An alignment is scored by three probabilistic models: (i) Position independent, (ii) coding, (iii) RNA. The independent and the coding model is a pair hidden Markov model. The RNA model is a pair stochastic context-free grammar. First, it calculates the *prior probability* that, given a model, the alignment is observed. Second, it calculates the *posterior probability* that, given an alignment, it has been generated by one of the three models. The posterior probabilities are compared to the position independent background model and a “winner” is found. QRNA reads pairwise alignments in MFASTA format (i.e. FASTA format with gaps)

9.1.1 Three competing models in QRNA



9.1.2 Installing and basic usage of QRNA

- Use the files in `qrna-2.0.3d.tar.gz` located in the `Data/programs`-folder shipped with the tutorial
- don't forget to set the `QRNADB` environment variable (e.g. `export QRNADB=$HOME/Tutorial/Data/programs/qrna-2.0.3d/lib/`) and add it to your `.bashrc`
- follow the instructions in the `INSTALL` document and make the binaries
- create the directory `~/Tutorial/Progs/qrna` and move the binaries located in the `src/` sub-directory into this folder and add it to your `.bashrc` (e.g. `export PATH=${HOME}/Tutorial/Progs:${PATH}:${HOME}/Tutorial/Progs/qrna`)
- first read the help text (option `-h`).
- for advanced use of QRNA read the `userguide.pdf` shipped with the package (in the `documentation` folder)
- `-a` tells QRNA to print the alignment

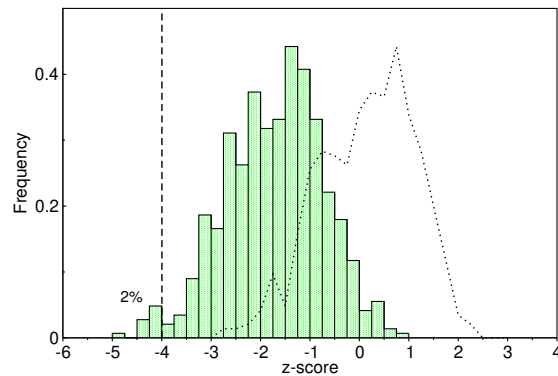
```

$ eqrna -h
$ eqrna -a Data/qrna/tRNA.fa
$ eqrna -a Data/qrna/coding.fa
  
```

[...]

```

Divergence time (variable): 0.214132 0.208107 0.203995
[alignment ID = 72.37 MUT = 23.68 GAP = 3.95]
  
```



The overlap of real (bars) and shuffled (dashed line) tRNAs is relatively high.

```
length alignment: 76 (id=72.37) (mut=23.68) (gap=3.95)
posX: 0-75 [0-72](73) -- (0.18 0.30 0.36 0.16)
posY: 0-75 [0-75](76) -- (0.14 0.34 0.37 0.14)
```

```
DA0780 GGGCTCGTAGCTCAGCT.GGAAGAGCGCGGCGTTTGCAACGCCGAGGCCT
DA0940 GGGCCGGTAGCTCAGCCTGGGAGAGCGTCGGCTTTGCAAGCCGAAGGCC
```

```
DA0780 GGGGTTCAAATCCCCACGGGTCCA..
DA0940 CGGGTTCGAATCCCGGCCGGTCCACC
```

[...]

9.2 AlifoldZ

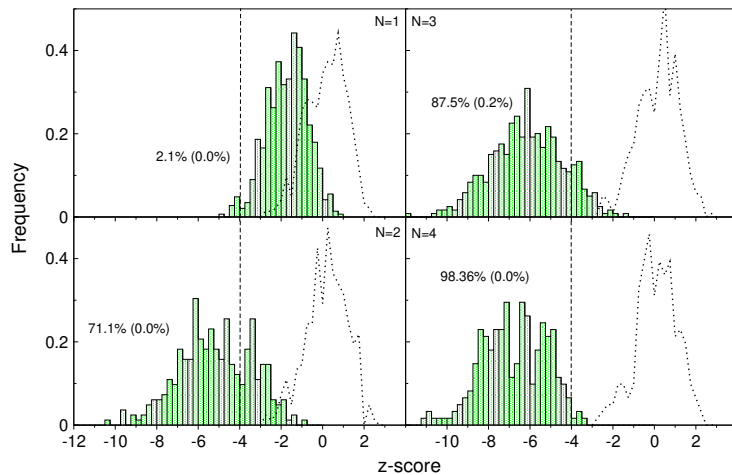
AlifoldZ is based on an old hypothesis: functional RNAs are thermodynamically more stable than expected by chance. This hypothesis can be statistically tested by calculating z -scores: Calculate the MFE m of the native RNA and the mean μ and standard deviation σ of the background distribution of a large number of random (shuffled) RNAs. The normalized z -score $z = (m - \mu)/\sigma$ expresses how many standard deviations the native RNA is more stable than random sequences.

Unfortunately, most ncRNAs are not significantly more stable than the background. See for example the distribution of z -scores of some tRNAs, where the overlap of real (green bars) and shuffled (dashed line) tRNAs is relatively high.

9.2.1 z -score distribution of tRNAs

AlifoldZ calculates z -scores for consensus structures folded by `RNAalifold`. This significantly improves the detection performance compared to single sequence folding.

9.2.2 z -score distribution of tRNA consensus folds



The separation of real and shuffled tRNAs gets evident with more sequences in the alignment.

9.2.3 Installation and basic usage of AlifoldZ

- Use the tarball `alifoldz_adopted.tar.gz` located in the `Data/programs/-` folder shipped with the tutorial
- Copy the files into your `Progs` directory (It's just one single Perl script which needs `RNAfold` and `RNAalifold` and an important perl module located in the `Math` subdirectory)
`$ cp -r alifoldz.pl Math/ ~/Tutorial/Progs/`
- add the perl module to your `PERL5LIB` variable in the `.bashrc`
`$ export PERL5LIB=$HOME/Tutorial/Progs/:$PERL5LIB`
- test the tool

```
$ alifoldz.pl -h
$ alifoldz.pl < Data/alifoldz/miRNA.aln
$ alifoldz.pl -w 120 -x 100 < Data/alifoldz/unknown.aln
```

9.3 RNAz

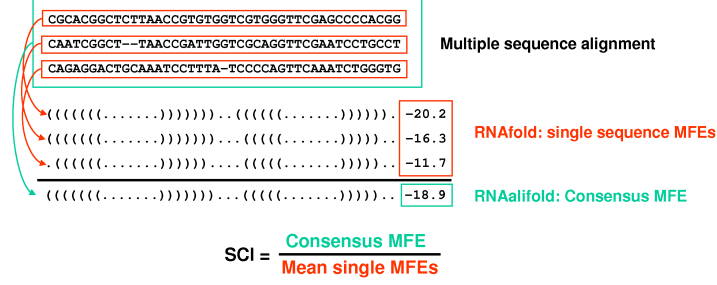
* New version by Someone who loves RNAz. This part of the tutorial is based on the RNAz 1.0 version which is obsolete quite a while already!!! *

`AlifoldZ` has some shortcomings that limits its usefulness in practice: The z -scores are not deterministic, i.e. you get a different score each time you run `AlifoldZ`. To get stable z -scores you need to sample a large number of random alignments which is computationally expensive. Moreover, `AlifoldZ` is extremely sensitive to alignment errors.

The program `RNAz` overcomes these problems by using a different approach to asses a multiple sequence alignment for significant RNA structures. It is based on two key innovations: (i) The structure conservation index (SCI) to measure structural conservation in an alignment and (ii) z -scores that are calculated by

regression without sampling. Both measures are combined to an overall score that is used to classify an alignment as “structured RNA” or “other”.

9.3.1 The structure conservation index



- The structure conservation index is an easy way to normalize an RNAalifold consensus MFE.

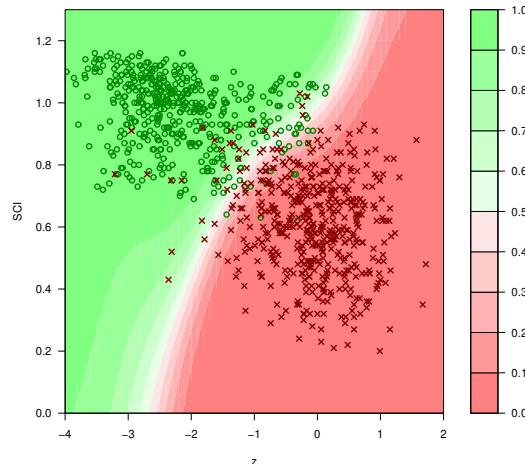
9.3.2 z-score regression

- The mean μ and standard deviation σ of random samples of a given sequence are functions of the length and the base composition:

$$\mu, \sigma(\text{length}, \frac{GC}{AT}, \frac{G}{C}, \frac{A}{T})$$

- It is therefore possible to calculate z-scores by solving this 5 dimensional regression problem.

9.3.3 SVM Classification



- A support vector machine learning algorithm is used to classify an alignment based on z-score and structure conservation index.

9.3.4 Installation of RNAz

Installation is done according to the instructions used by the **ViennaRNA Package**. Just use the `--prefix` option as mentioned earlier and add the `PATH` to `.bashrc`

- RNAz is available at: <http://www.tbi.univie.ac.at/~wash/RNAz>
- Package includes the core program **RNAz** in ISO C, a set of helper programs in Perl, and an extensive manual.

9.3.5 Basic usage of RNAz

* where to get examples from (RNAz install package) - commands work with v2 but txt needs to be adopted *

- RNAz reads one or more multiple sequence alignments in `clustalw` or `MAF` format.

```
$ RNAz --help
$ RNAz tRNA.aln
$ RNAz --both-strands --predict-strand tRNA.maf
```

9.3.6 Advanced usage of RNAz

- RNAz is limited to a maximum alignment length of 400 columns and a maximum number of 6 sequences. To process larger alignments a set of Perl helper scripts are used.
- Selecting one or more subsets of sequences from an alignment with more than 6 sequences:

```
$ rnazSelectSeqs.pl miRNA.maf |RNAz
$ rnazSelectSeqs.pl --num-seqs=4 --num-samples=3 miRNA.maf |RNAz
```

- Scoring long alignments in overlapping windows:

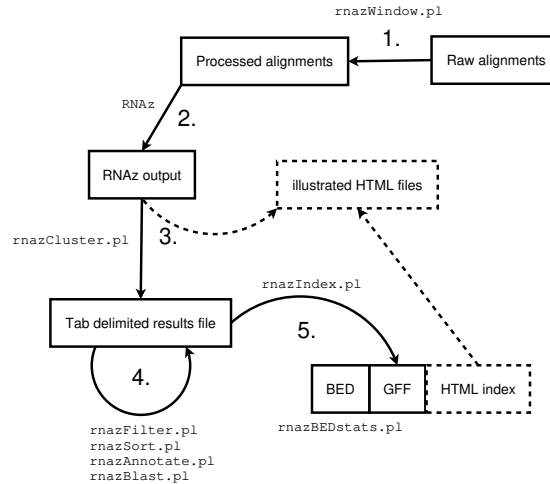
```
$ rnazWindow.pl --window=120 --slide=40 unknown.aln \
| RNAz --both-strands
```

9.4 Large scale screens

The **RNAz** package provides a set of Perl scripts that implement a complete analysis pipeline suitable for medium to large scale screens of genomic data.

9.4.1 General procedure

- (a) Obtain or create multiple sequence alignments in `MAF` format
- (b) Run through the **RNAz** pipeline:



9.4.2 Examples in this tutorial

- Align Epstein Barr Virus genome (Acc.no: NC_007605) to two related primate viruses (Acc.nos: NC_004367, NC_006146) using **multiz** and run it through the **RNAz** pipeline. * where are this data coming from? file from NCBI differs from those hidden in genefinding/rnaz/herpes *
- Analyze snoRNA cluster in the human genome for conserved RNA structures: download pre-computed alignments from the UCSC genome browser and run it through the **RNAz** pipeline

9.4.3 Example a: Preparation of data

- multiz** and **blastz** are available here: http://www.bx.psu.edu/miller_lab/
- Download the viral genomes in FASTA format and reformat the header strictly according to the rules given in the **multiz** documentation (http://www.bx.psu.edu/miller_lab/dist/tba_howto.pdf), e.g.:
- You have to edit the "multiz" Makefile and replace

```
CFLAGS = -Wall -Wextra -Werror
```

with

```
CFLAGS = -Wall -Wextra #-Werror
```

and then simply use the **make** command to compile both programs.

* dont understand what to do *

```
>NC_007605:genome:1+:149696
AGAATTCGTCTTGCTCTATTACCCCTTACTTTTCTTCTTGCCCGTTCTTTCTTAGTAT
GAATCCAGTATGCCTGCCTGTAATTGTTGCGCCCTACCTCTTTGGCTGGCGGCTATTGC
CGCCTCGTGTTCACGGCCTCAGTTAGTACCGTTGTGACCGCCACCGGCTTGGCCCTCTC
ACTTCTACTCTTTGGCAGCAGTGGCCAGCTCATATGCCGCTGCACAAAGGAAACTGCTGAC
ACCGGTGACAGTGCTTACTGCGGTTGTCACTTGTGAGTACACACGCACCATTTACAATGC
ATGATGTTTCGTGAGATTGATCTGTCTCTAACAGTTCACCTCCTCTGCTTTTCTCCTCAGT
CTTTGCAATTTGCCTAACATGGAGGATTGAGGACCCACCTTTTAATTCTCTTCTGTTTG
[...]
```

9.4.4 Example a: Aligning viral genomes

- To get a multiple alignment a phylogenetic tree and the following three steps are necessary:
 - (a) Run **blastz** each vs. each
 - (b) Combine blastz results to multiple sequence alignments
 - (c) Project raw alignments to a reference sequence.
- The corresponding commands:

```
all_bz - "((NC_007605 NC_006146) NC_004367)" | bash
tba "((NC_007605 NC_006146) NC_004367)" \
*.sing.maf raw-tba.maf
maf_project raw-tba.maf NC_007605 > final.maf
```

- Note: The tree is given in NEWICK like format with blanks instead of commas. The sequence data files must be named exactly like the names in this tree and in the FASTA headers.

9.4.5 Example a: Running the pipeline I

- First the alignments are filtered and sliced in overlapping windows:

```
$ rnazWindow.pl < final.maf > windows.maf
```

- RNAz is run on these windows:

```
$ RNAz --both-strands --show-gaps --cutoff=0.5 windows.maf \
> rnaz.out
```

- Overlapping hits are combined to “loci” and visualized on a web-site:

```
$ rnazCluster.pl --html rnaz.out > results.dat
```

9.4.6 Example a: Running the pipeline II

- The predicted hits are compared with available annotation of the genome:

```
$ rnazAnnotate.pl --bed annotation.bed results.dat \
> results_annotated.dat
```

- The results file is formatted in a HTML overview page:

```
$ rnazIndex.pl --html results_annotated.dat \
> results/index.html
```

9.4.7 Example a: Statistics on the results

- `rnazIndex.pl` can be used to generate a BED formatted annotation file which can be analyzed using `rnazBEDstats.pl` (after sorting, for the case the input alignments were unsorted)”

```
$ rnazIndex.pl --bed results.dat | \
    rnazBEDsort.pl | rnazBEDstats.pl
```

- `RNAzfilter.pl` can be used to filter the results by different criteria. In this case it gives us all loci with $P > 0.9$:

```
$ rnazFilter.pl "P>0.9" results.dat | \
    rnazIndex.pl --bed | \
    rnazBEDsort.pl | rnazBEDstats.pl
```

- To get an estimate on the (statistical) false positives one can repeat the complete screen with randomized alignments:

```
$ rnazRandomizeAln final.maf > random.maf
```

9.4.8 Example b: Obtaining pre-computed alignments from UCSC

- Go to the UCSC genome browser (<http://genome.ucsc.edu>) and go to “Tables”. Download “multiz17” alignments in MAF format for the region: chr11:93103000-93108000

Home Genomes Genome Browser Blat Tables Gene Sorter PCR FAQ Help

Table Browser

Use this program to get the data associated with a track in text format, to calculate intersections between tracks, and to retrieve DNA sequence covered by a track. See [Using the Table Browser](#) for a description of the controls in this form.

clade: genome: assembly:

group: track:

table: [describe table schema](#)

region: ☐ genome ☒ position

filter:

intersection:

correlation:

output format:

output file: (leave blank to keep output in browser)

file type returned: ☒ plain text ☐ gzip compressed

To reset all user cart settings (including custom tracks), [click here](#).

9.4.9 Example b: Running the pipeline

- The Perl scripts are run in the same order as in Example 1:

```
$ rnazWindow.pl --min-seqs=4 region.maf > windows.maf
$ RNAz --both-strands --show-gaps --cutoff=0.5 windows.maf \
    > rnaz.out
$ rnazCluster.pl --html rnaz.out > results.dat
$ rnazAnnotate.pl --bed annotation.bed results.dat \
    > results_annotated.dat
$ rnazIndex.pl --html results_annotated.dat \
    > results/index.html
```

- The results can be exported as UCSC BED file which can be displayed in the genome browser:

```
$ rnazIndex.pl --bed --ucsc results.dat > prediction.bed
```

9.4.10 Example b: Visualizing the results on the genome browser

- Upload the BED file as “Custom Track”...

The screenshot shows the UCSC Genome Browser Table Browser interface. At the top is a navigation bar with links: Home, Genomes, Genome Browser, Blat, Tables, Gene Sorter, PCR, FAQ, Help. Below this is the 'Table Browser' title and a brief description: 'Use this program to get the data associated with a track in text format, to calculate intersections between tracks, and to retrieve DNA sequence covered by a track. See Using the Table Browser for a description of the controls in this form.' The form contains several sections: 'criteria' with dropdowns for 'clade' (Vertebrate), 'genome' (Human), and 'assembly' (Mar. 2006); 'group' (Genes and Gene Prediction Tracks) and 'track' (Conservation); 'table' (multi2Two) with a 'describe table schema' link; 'region' with radio buttons for 'genome' and 'position' (set to chr11:91103000-91108000) and a 'lookup' button; 'filter' with a 'create' button; 'intersection' with a 'create' button; 'correlation' with a 'create' button; 'output format' (MAF - multiple alignment format); 'output file' (region.maf) with a note '(leave blank to keep output in browser)'; and 'file type returned' with radio buttons for 'plain text' (selected) and 'gzip compressed'. At the bottom are 'get output' and 'summary/statistics' buttons, and a link to 'reset all user cart settings (including custom tracks), click here.'

- ... and have a look at the results:

