



Test

Nom et prénom :

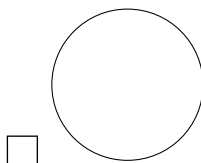
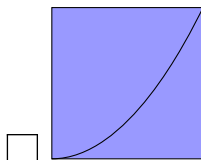
.....

Certaines questions peuvent sembler étrange, c'est le but !

QCM USING AMC LATEX FORMAT

Question 1 Among the following shapes, where is the circle

☐ \triangle



Question 2 Among the following persons, which one has ever been a President of the French Republic?

☐ Alain Prost

☐ with an image

☐ René Coty

☐ Marcel Proust

Question 3 Test for itemize html rendering,

- first item
- Second item blabla

test for enumerate html rendering,

1. The first item x^2 with math
2. The second **item** with bold


- ☐ 1. The first item x^2
2. The second **item**

☐ 1 bullet list and 1 ordered list

Remarks : the tag in item are ignored.



Question 4 ♣ Quels sont les opérations qui donnent un chiffre présent dans le tableau?

| | | |
|------|---|-------|
| 12 | 2 | 2^3 |
| Deux |  | |

☐ Ou en C using `alltt` package

```
int s=-2;
for (int i=0;i<4; i++){
s=i*i+s;
}
```

☐ Avec une équation


$$\int_0^2 x dx$$

☐ $|-10 - 2|$ (math inline and newcommand)

☐ 6×6

☐ Avec une équation matricielle

$$\det \begin{pmatrix} 1 & 2 \\ -1 & 10 \end{pmatrix} = \begin{vmatrix} 1 & 2 \\ -1 & 10 \end{vmatrix} \quad (1)$$

☐ la réponse en image 

☐ Aucune de ces réponses n'est correcte.

Question 5 ♣ Among the following cities, which ones are French prefectures?

☐ Avignon

☐ Sainte-Menehould

☐ Poitiers

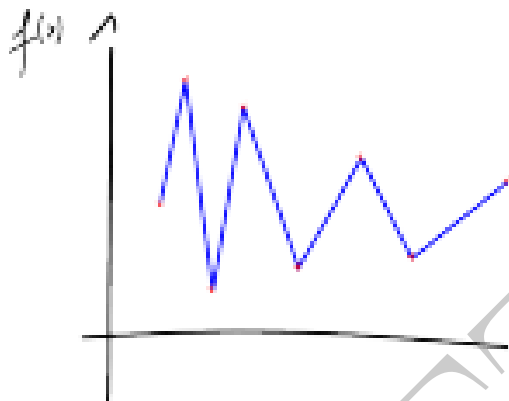
☐ Aucune de ces réponses n'est correcte.

Question 6 ♣ Quel fruit possède un noyau?

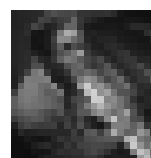
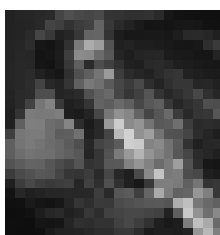
☐ le Kiwi ☐ La pomme ☐ La tomate
☐ Aucune de ces réponses n'est correcte.



Question 7 On souhaite faire passer *exactement*, par N points donnés, un **polynôme** de degré **strictement** égal à $N - 1$. Pour trouver les coefficients on doit résoudre un *problème*



- ☐ de moindre carré
- ☐ d'interpolation
- ☐ de Thelonius Sphere Monk



Question 8 Here is a test for `mhchem`- \LaTeX package. It is not yet supported by \LaTeX ML, hence the rendering will be fully delegated to `mathjax`. To use it, you need to add `mhchem` in the `mathjax` moodle plugin (ask to admin, see details in README file). A complicated chimical equation $\text{Hg}^{2+} \xrightarrow{\text{I}^-} \text{HgI}_2 \xrightarrow{\text{I}^-} [\text{Hg}^{\text{II}}\text{I}_4]^{2-}$, the same written in math mode : $\text{Hg}^{2+} \xrightarrow{\text{I}^-} \text{HgI}_2 \xrightarrow{\text{I}^-} [\text{Hg}^{\text{II}}\text{I}_4]^{2-}$, combine with other math operator $K = \text{Hg}^{2+} \xrightarrow{\text{I}^-} \text{HgI}_2 \xrightarrow{\text{I}^-} [\text{Hg}^{\text{II}}\text{I}_4]^{2-}$ and finally placed in the equation environment



- ☐ a simpler one $\text{CO}_2 + \text{C} \longrightarrow 2 \text{CO}$.
- ☐ Wrong Choice!