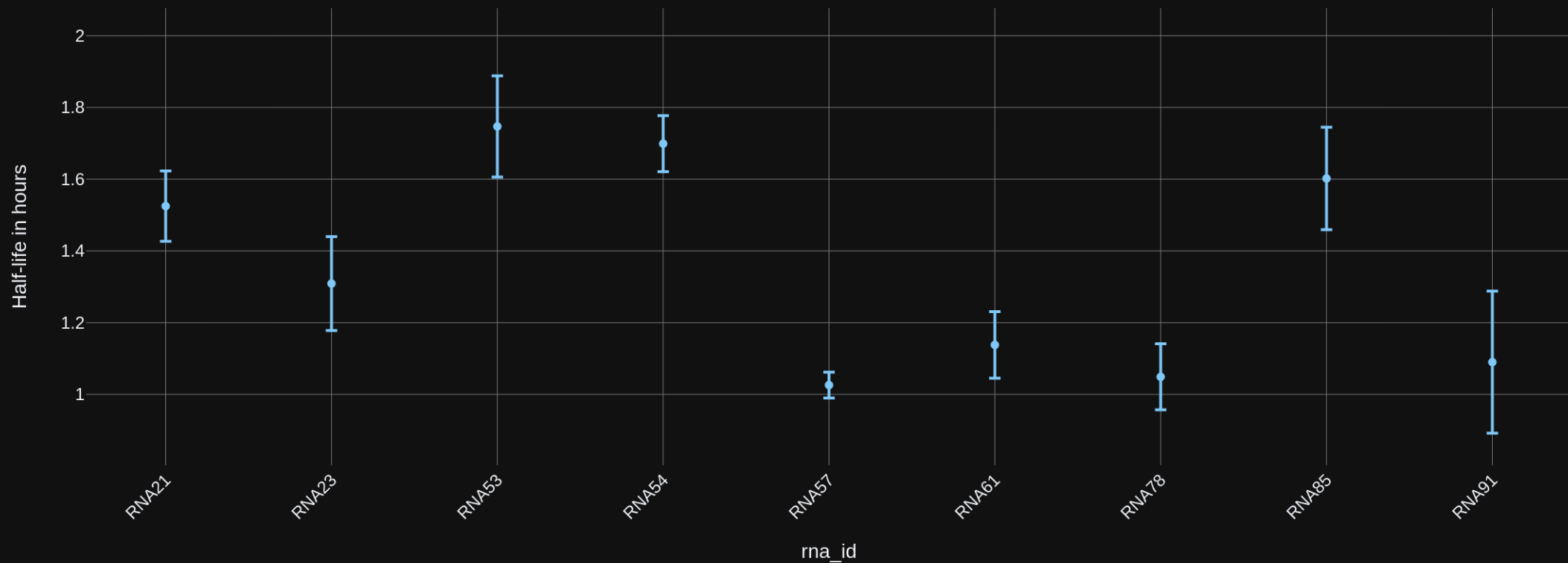
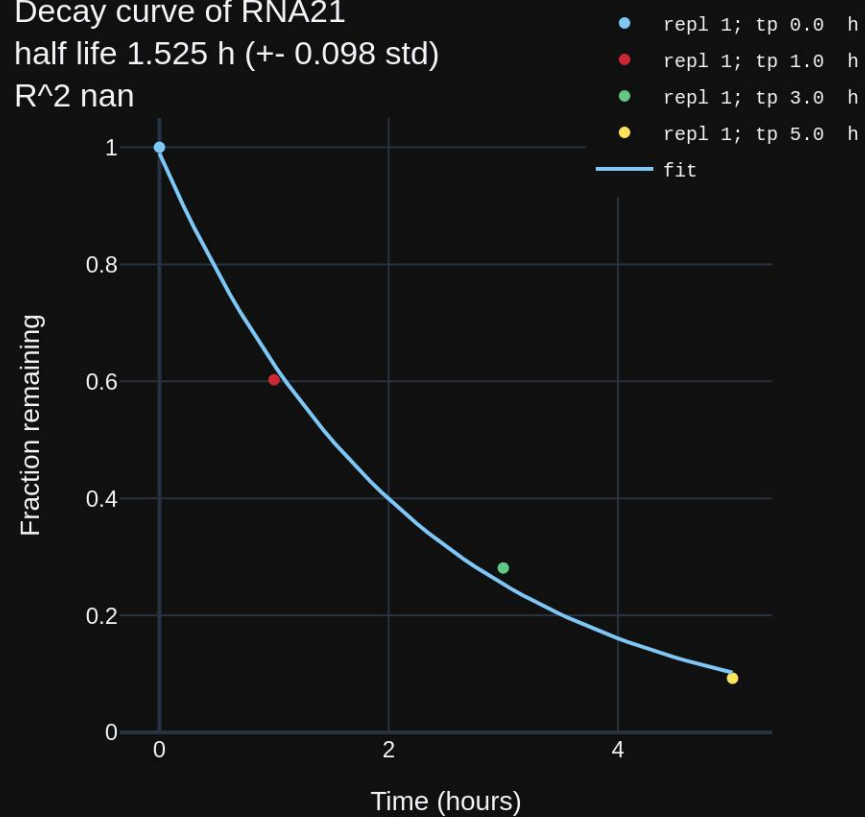


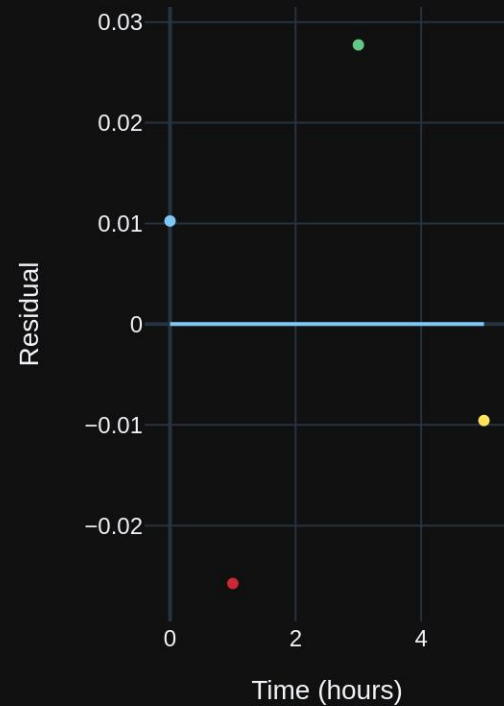
Mean half-life



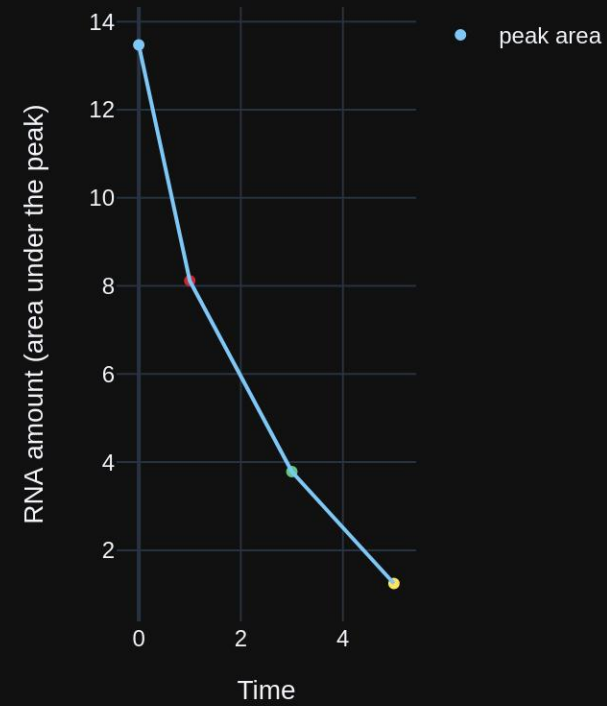
Decay curve of RNA21
half life 1.525 h (+- 0.098 std)
R^2 nan



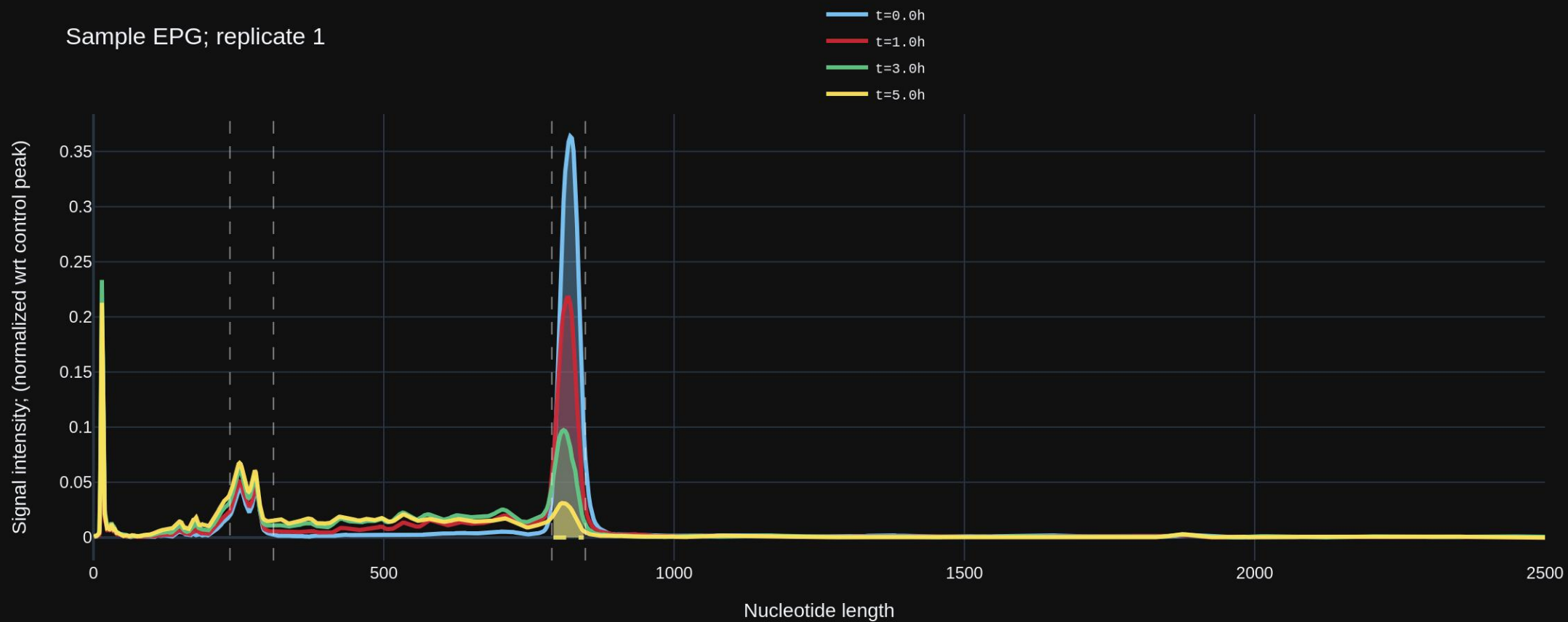
Exponent fit residuals



RNA amount



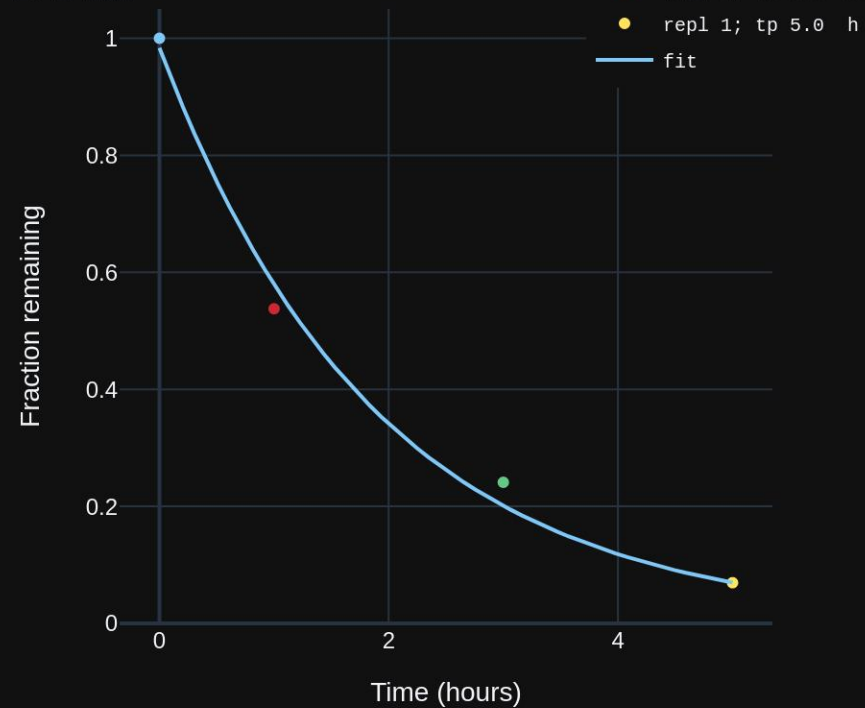
Sample EPG; replicate 1



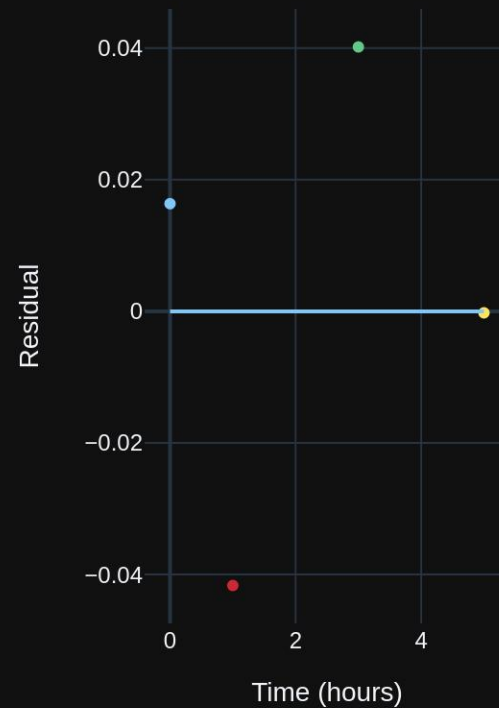
Decay curve of RNA23

half life 1.309 h (+- 0.131 std)

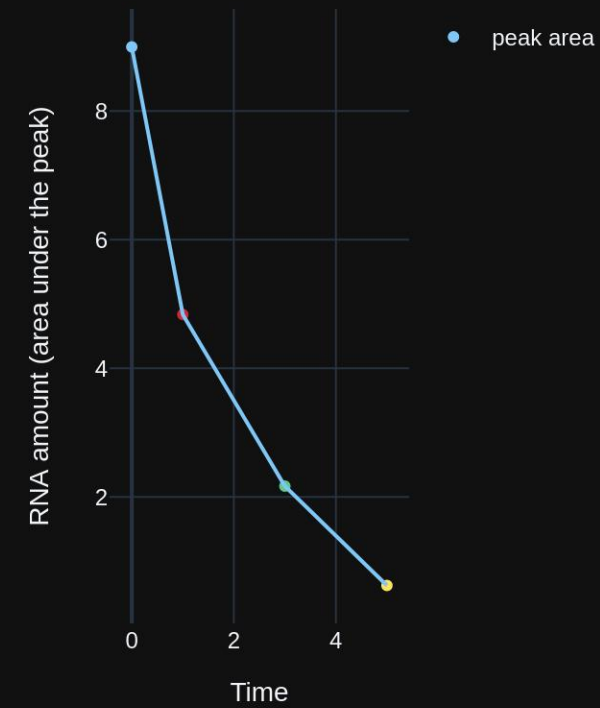
R² nan



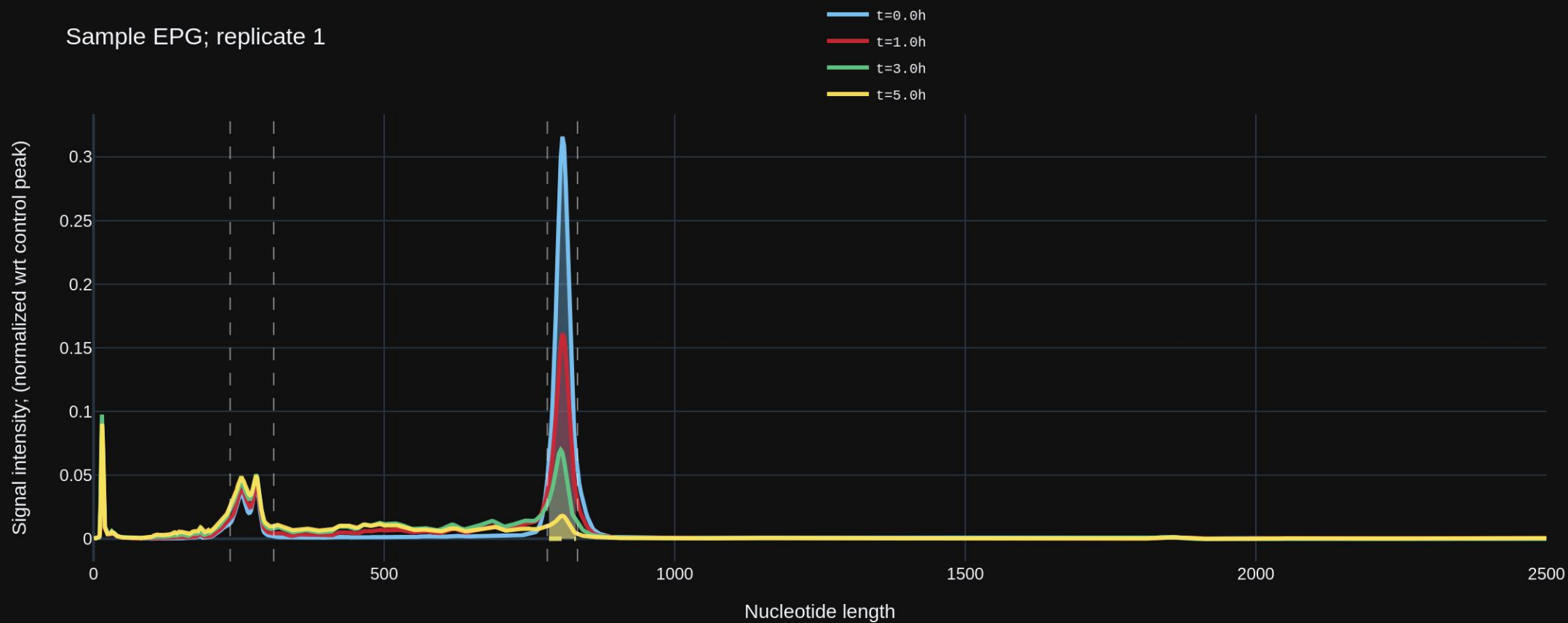
Exponent fit residuals



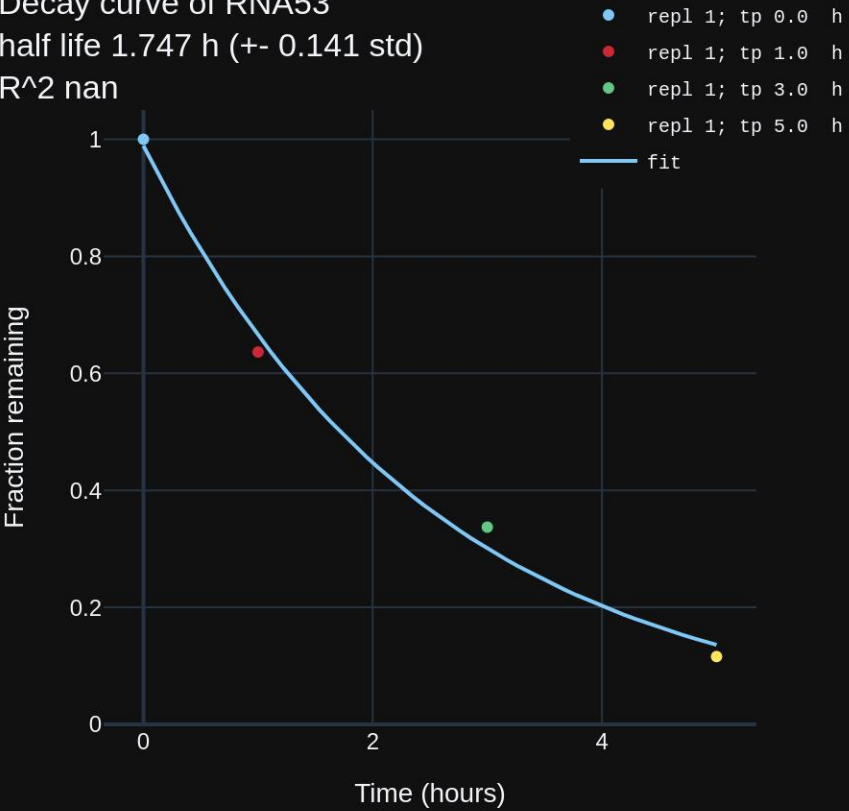
RNA amount



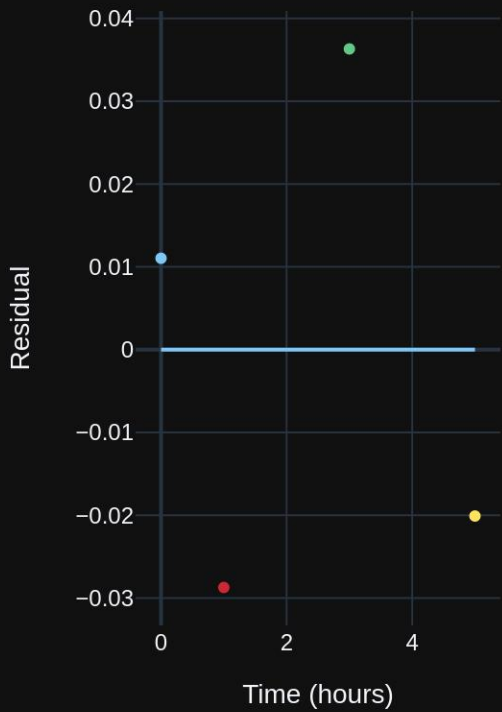
Sample EPG; replicate 1



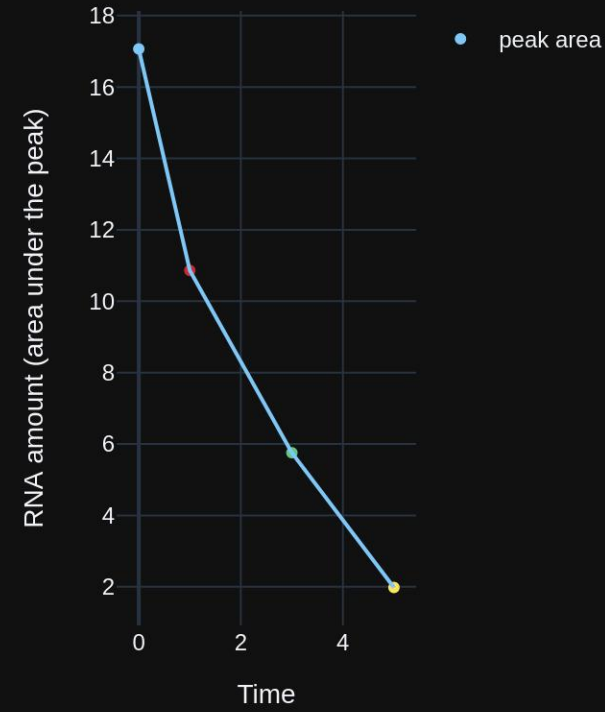
Decay curve of RNA53
half life 1.747 h (+- 0.141 std)
R^2 nan



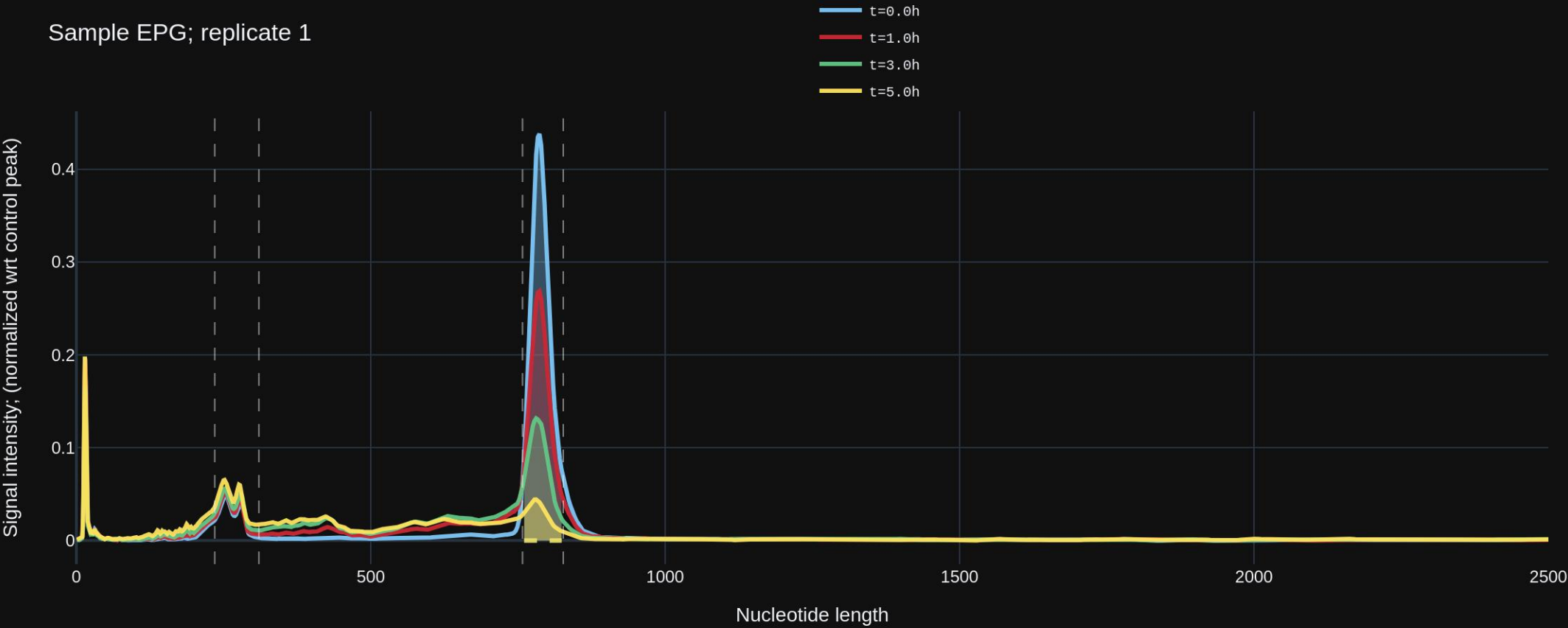
Exponent fit residuals



RNA amount



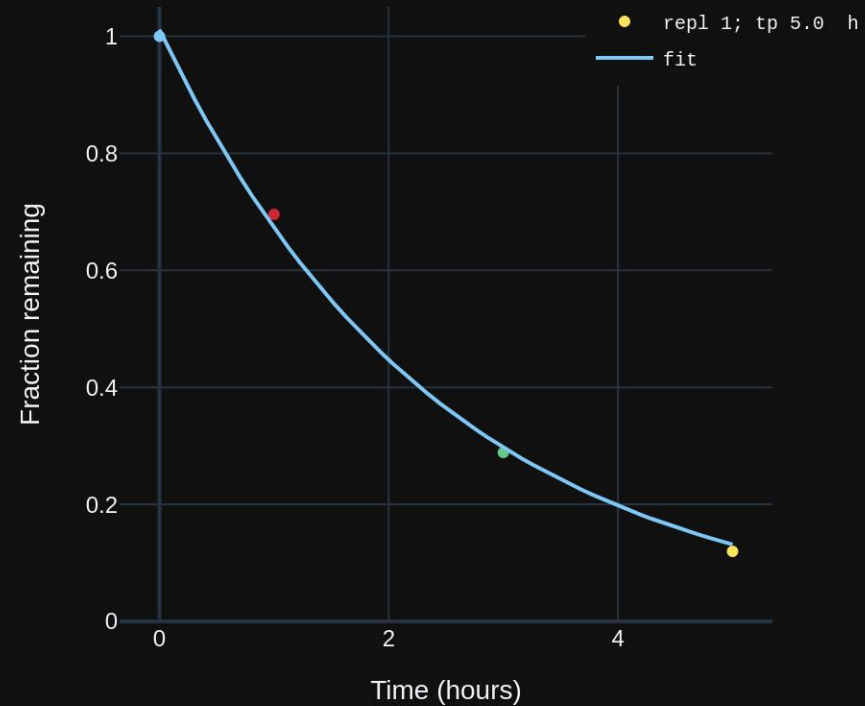
Sample EPG; replicate 1



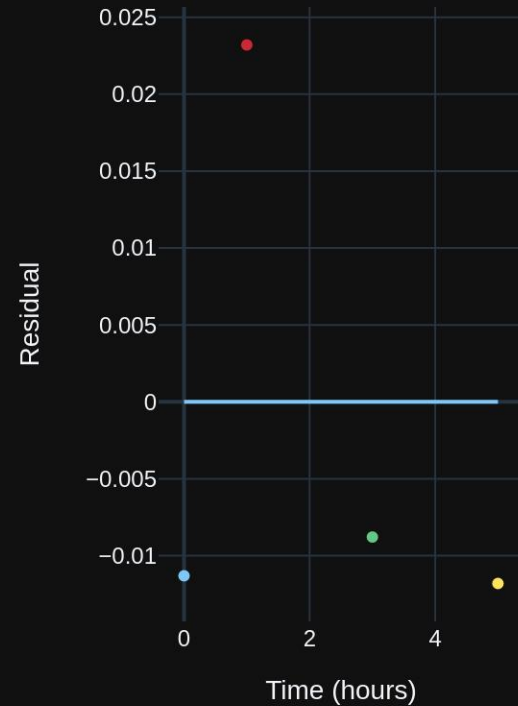
Decay curve of RNA54

half life 1.699 h (+- 0.078 std)

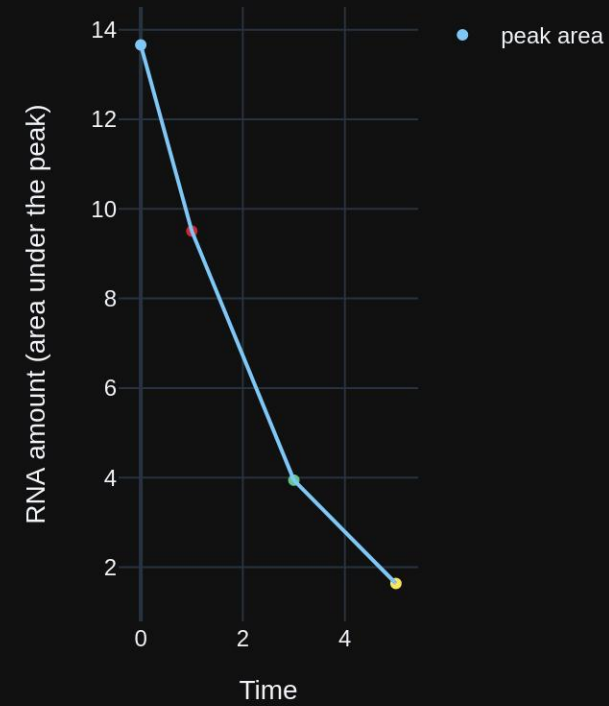
R^2 nan



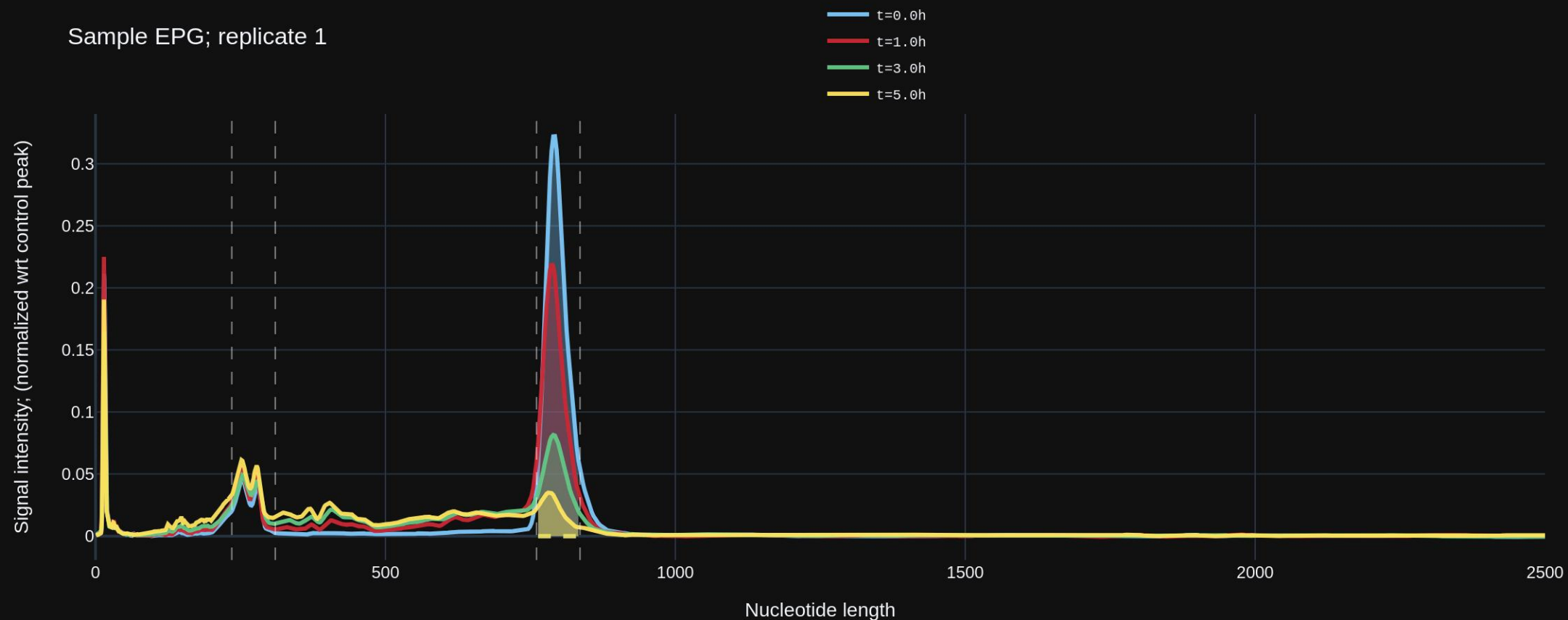
Exponent fit residuals



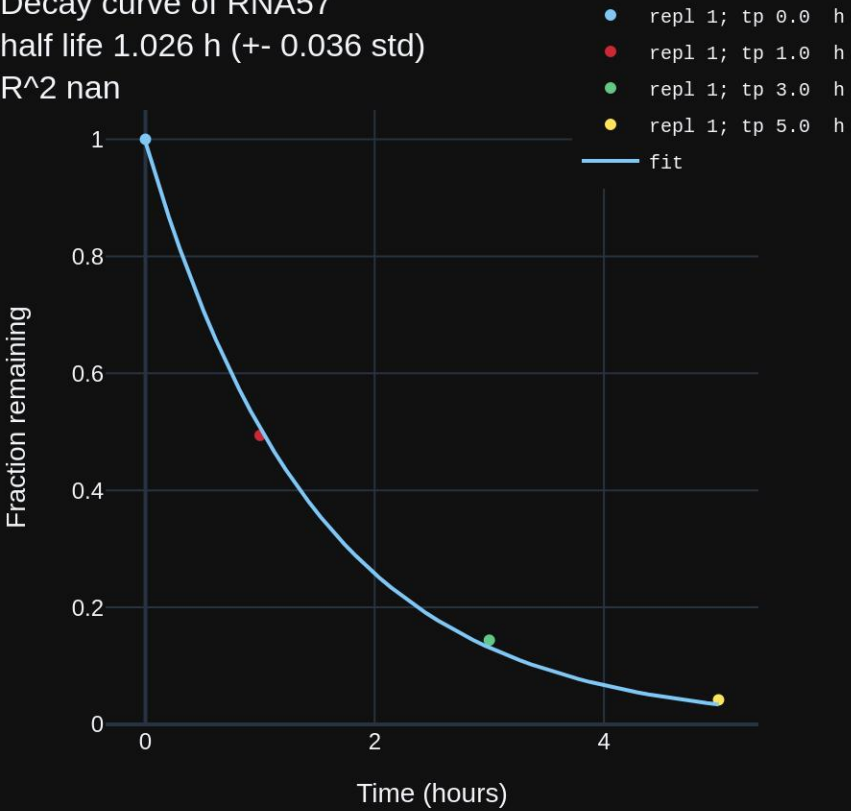
RNA amount



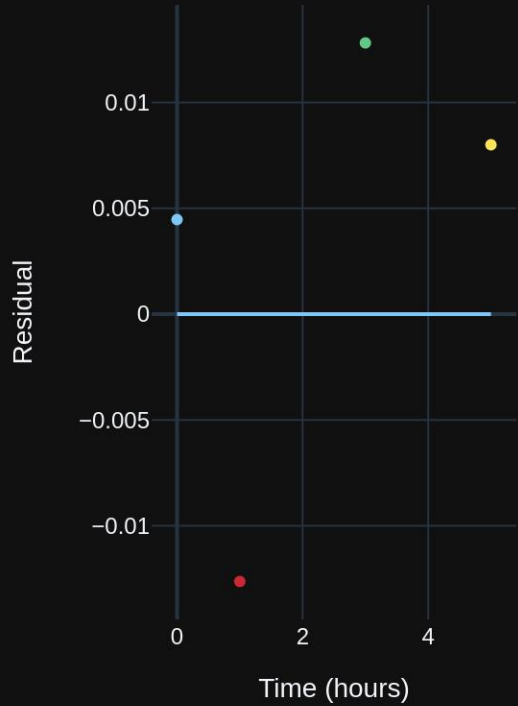
Sample EPG; replicate 1



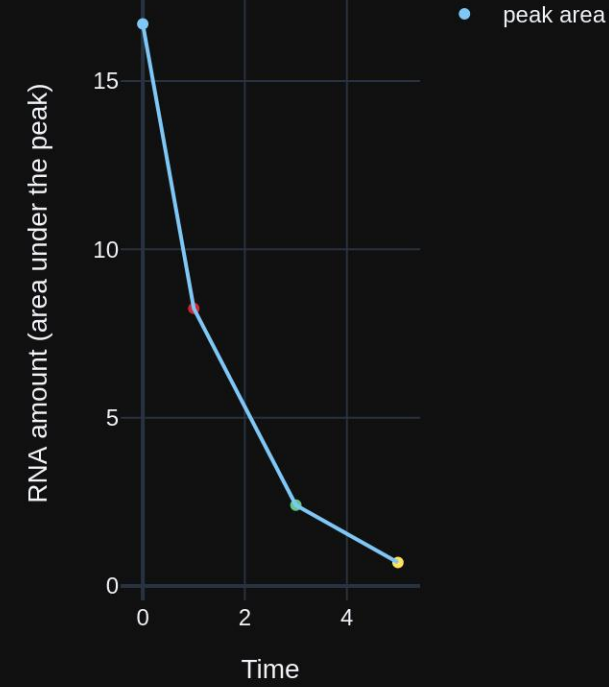
Decay curve of RNA57
half life 1.026 h (+- 0.036 std)
R^2 nan



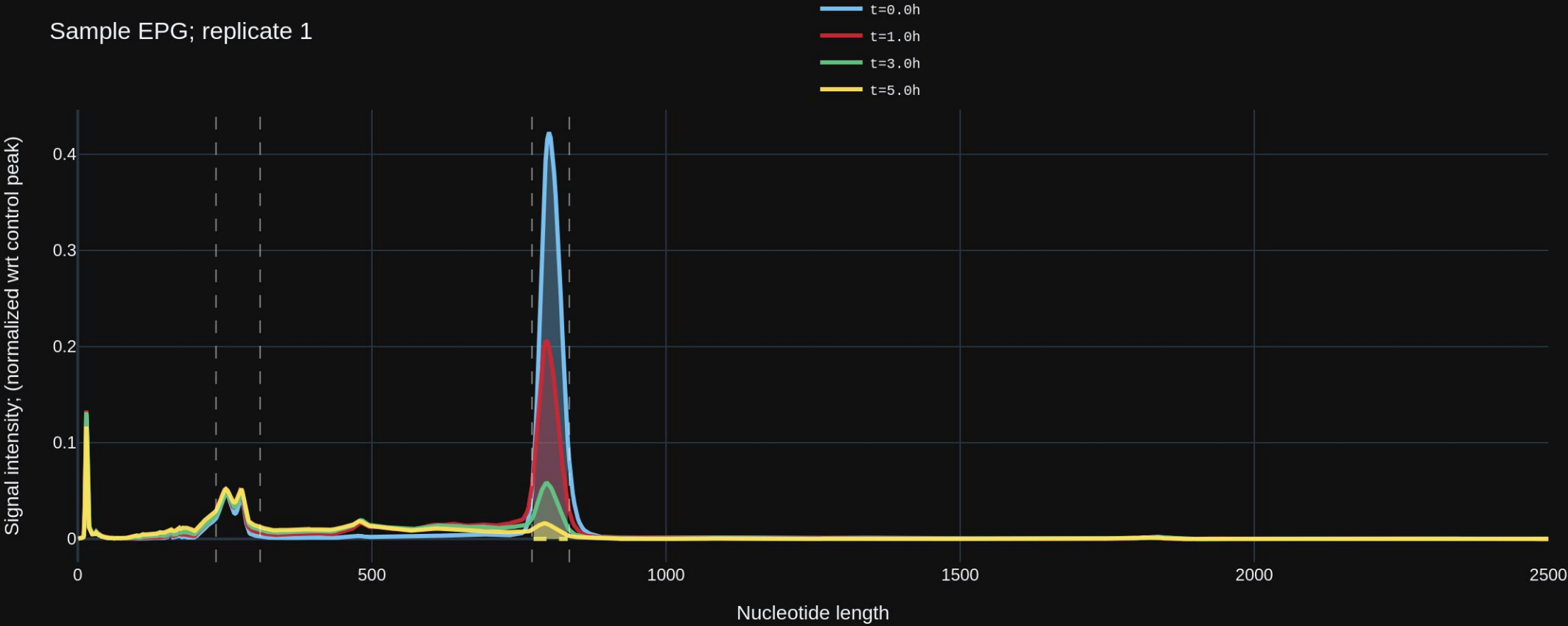
Exponent fit residuals



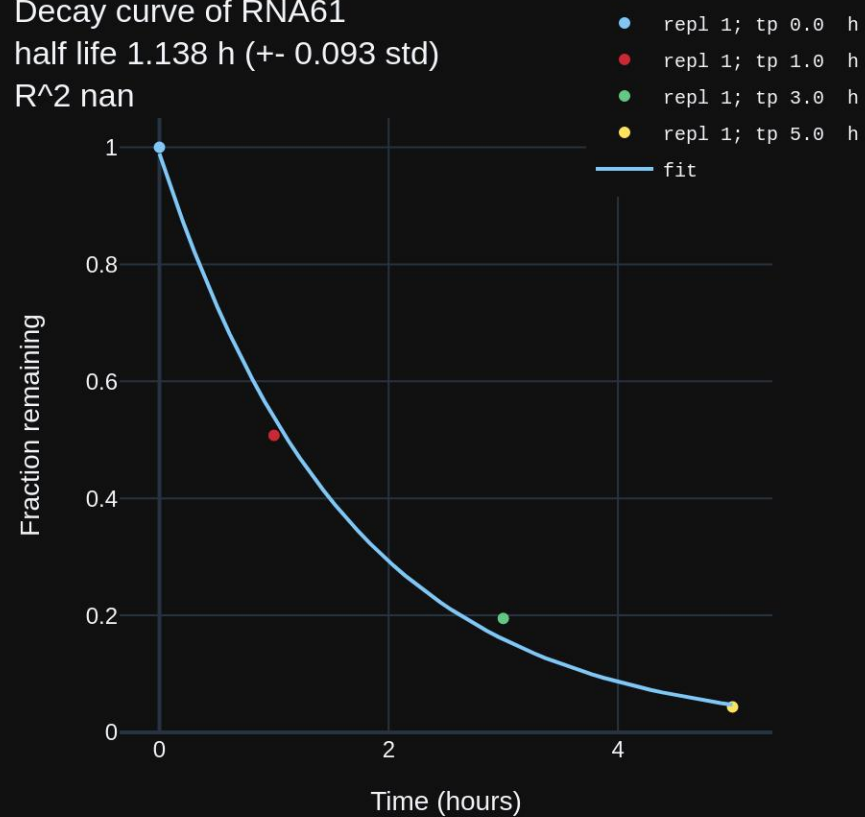
RNA amount



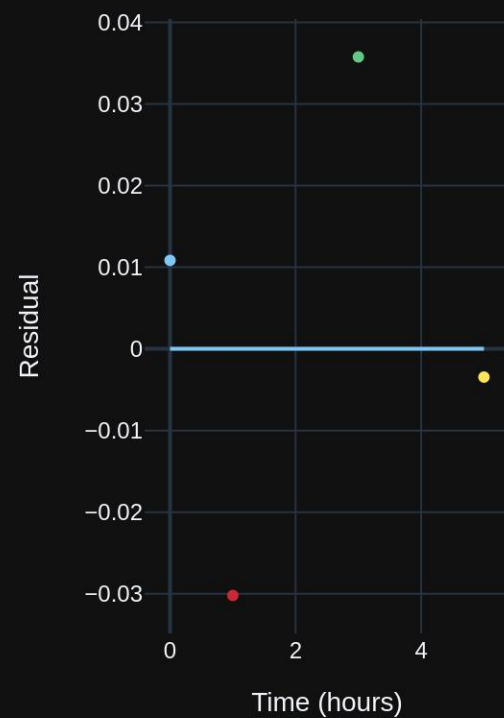
Sample EPG; replicate 1



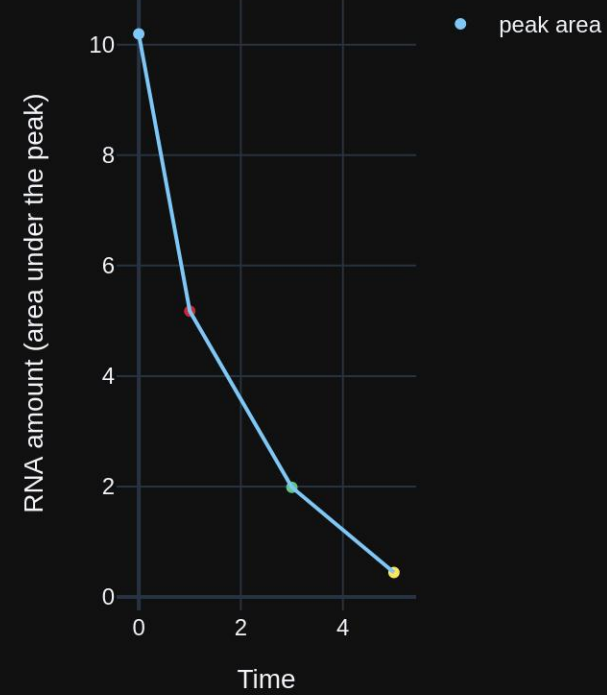
Decay curve of RNA61
half life 1.138 h (+- 0.093 std)
R^2 nan



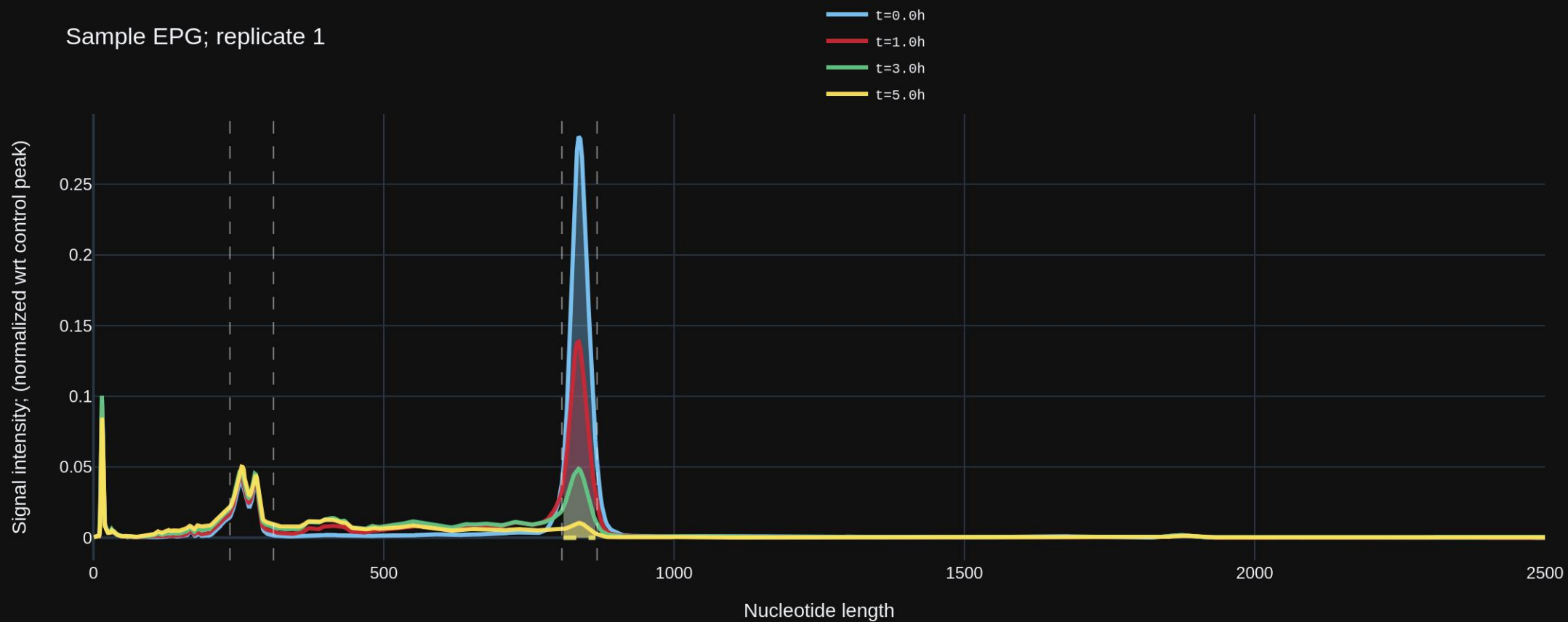
Exponent fit residuals



RNA amount



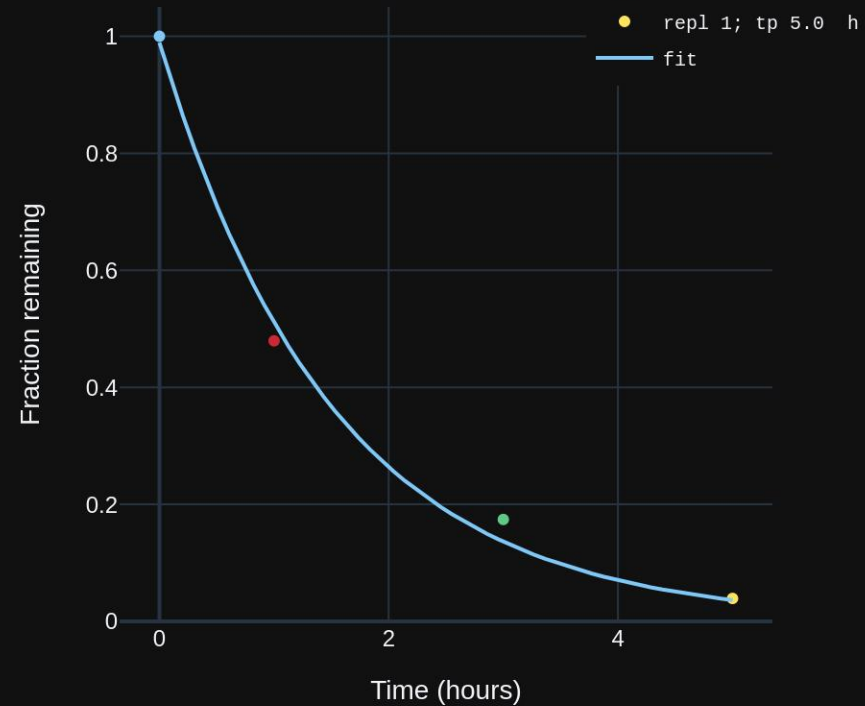
Sample EPG; replicate 1



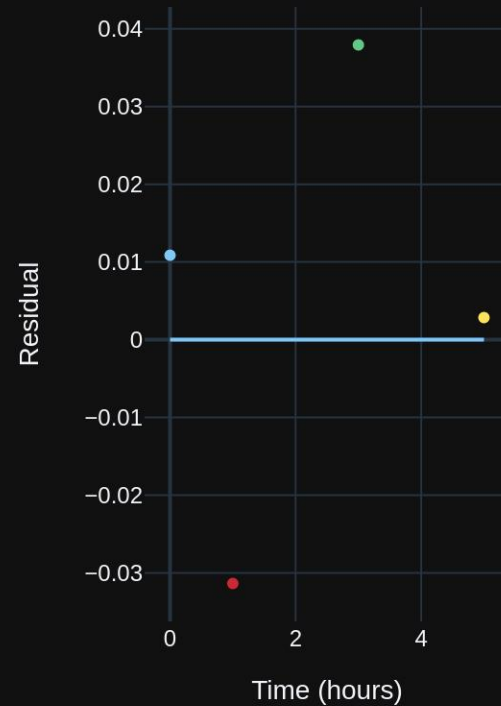
Decay curve of RNA78

half life 1.049 h (+- 0.092 std)

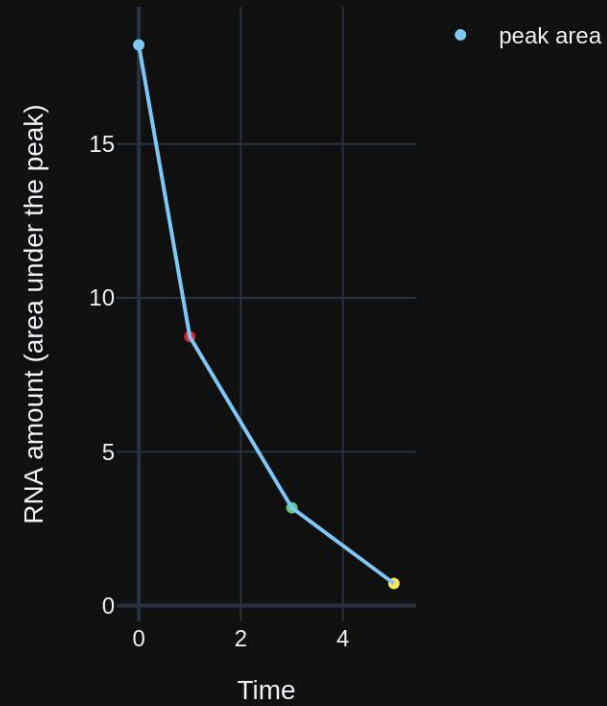
R^2 nan



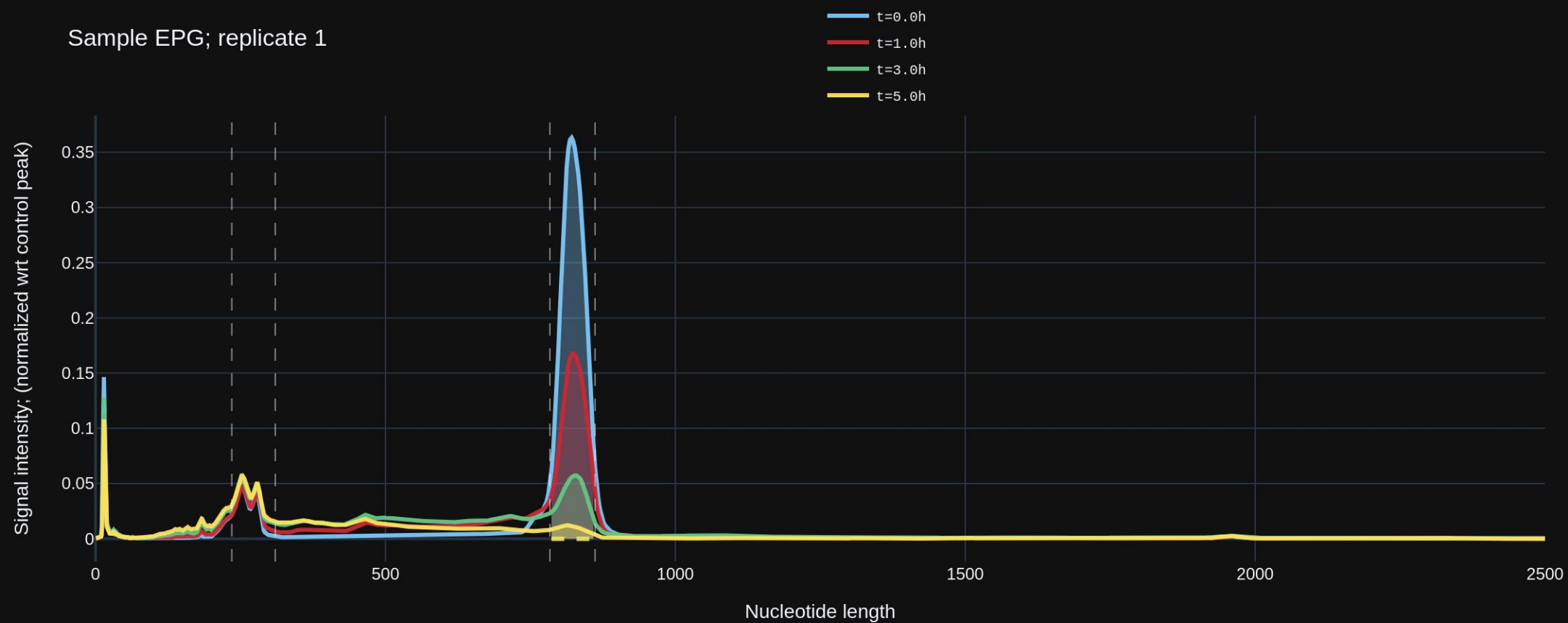
Exponent fit residuals



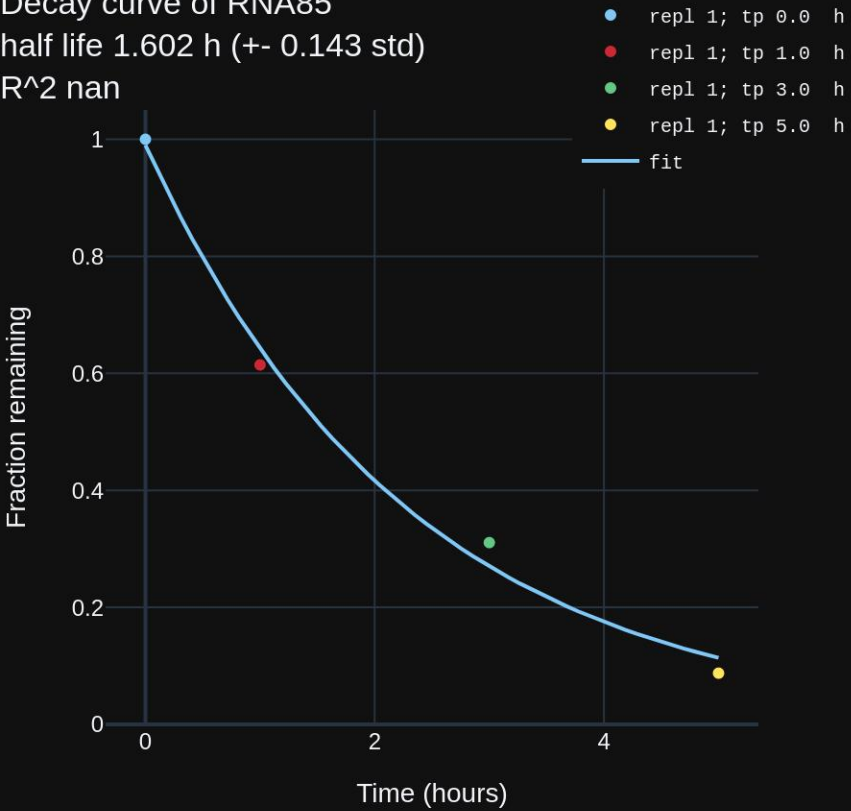
RNA amount



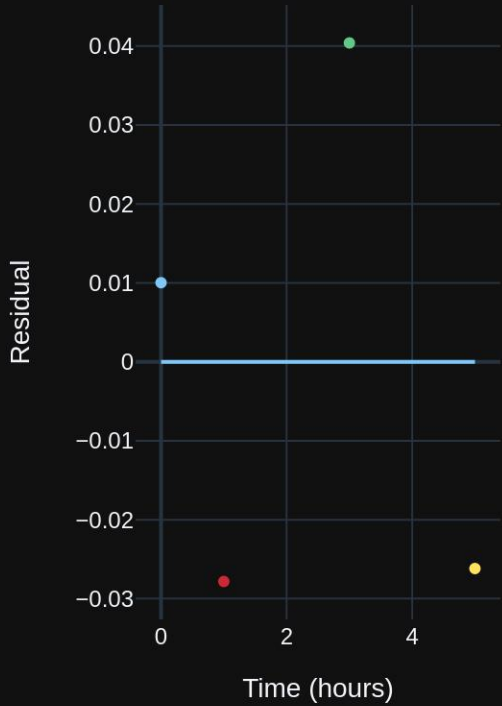
Sample EPG; replicate 1



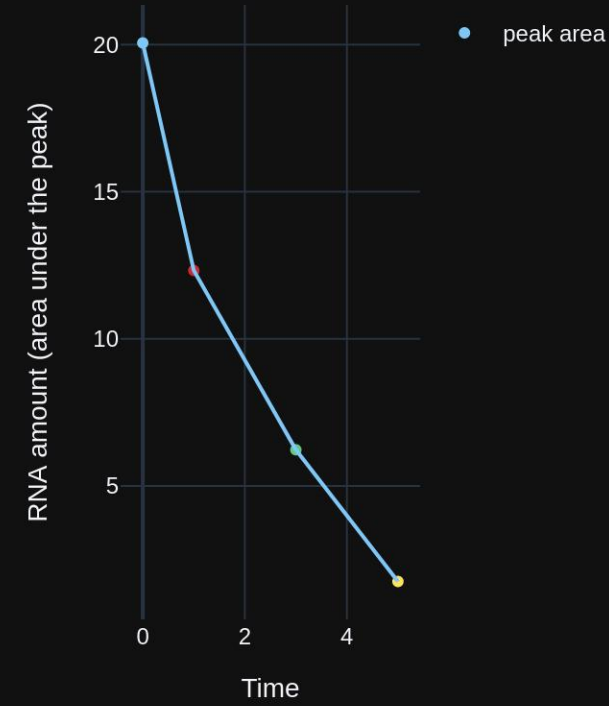
Decay curve of RNA85
half life 1.602 h (+- 0.143 std)
R^2 nan



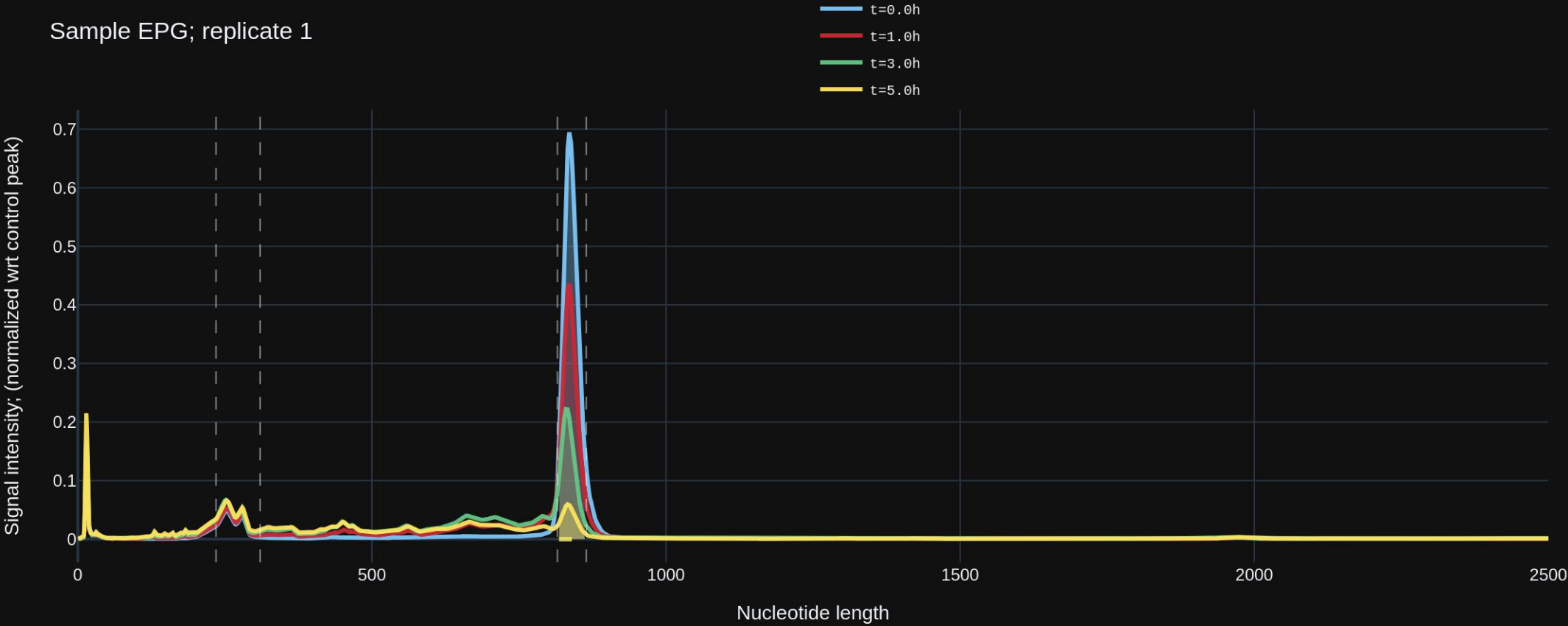
Exponent fit residuals



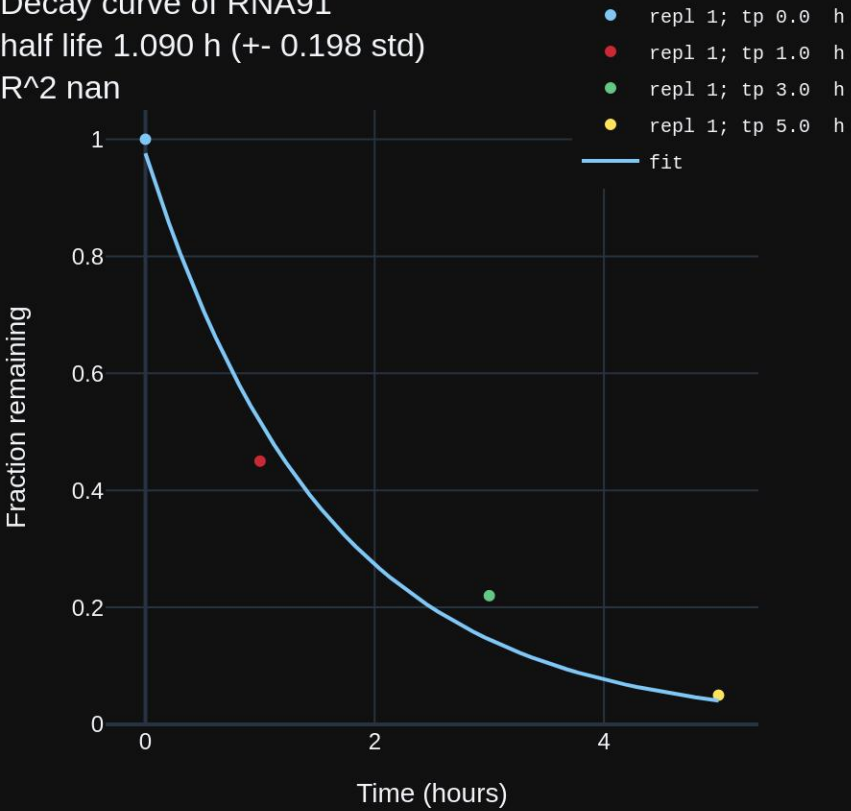
RNA amount



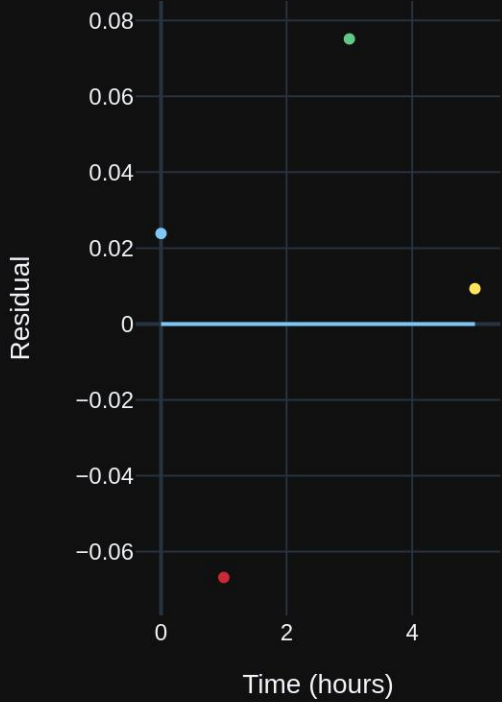
Sample EPG; replicate 1



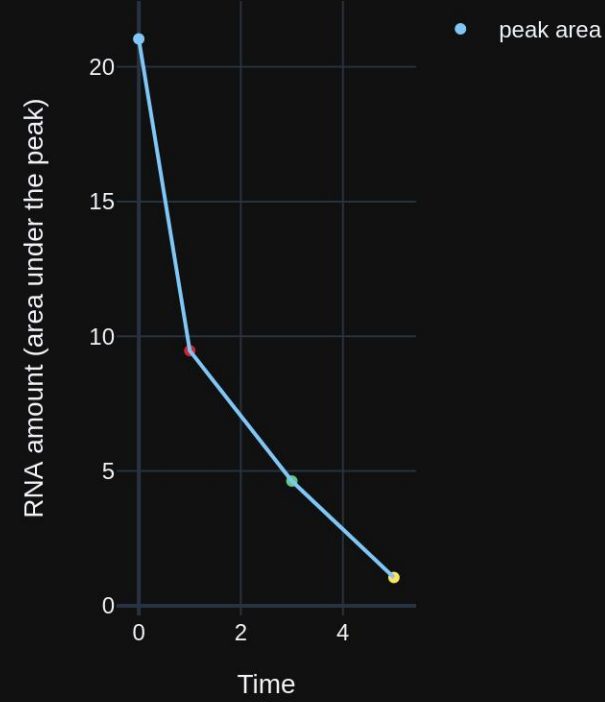
Decay curve of RNA91
half life 1.090 h (+- 0.198 std)
R^2 nan



Exponent fit residuals



RNA amount



Sample EPG; replicate 1

